

Big rock

A

Pick up tempo!
(solo pick up)

1.

2.

Gliss

B

Freedom now blow PICK UP (solo) **C**

FINE D F⁷ B^{b7} A^{b13b5}

G⁷ G^{b7#9} F^{7#9} A^{b7b5} G⁷ C⁷ B^bmaj⁷

1. 2.

B^bmaj⁷ A^{b7} G⁷ A^{b7} B^bmaj⁷ A^{b7} D D^{b7}

D Bridge

Alt 1, Big rock, sid 2/2

Chord progression for the Bridge section:

Line 1: G_b^7 $G^{7,5}$ G_b^7 D_b^7 $D^{7\#9,5}$ D_b^7

Line 2: $A_b^{7,5}$ G^7 $G_b^{9\#5}$ E_b^{13} A_b^{maj7} $A^{13\#9,5}$ B_b^7 A_b^7

Line 3: D F^7 B_b^7 $A_b^{13,5}$ G^7 $G_b^{7\#9}$ $F^{7\#9}$ $A_b^{7,5}$

Line 4: G^7 C^7 B_b^{maj7} A_b^7 G^7 Trombon cadenza (Trombon pick up)

C Trombon (med bakgrunder)

First ending: (2nd x) (both x)

Second ending: 1. 2. **D**

Bridge: 8 2

E Trummor

Drum notation with dynamics: p f

Final measure: 3

D.S. al FINE

Big rock

A

Bara alt 1 pickup ---|

1.

2.



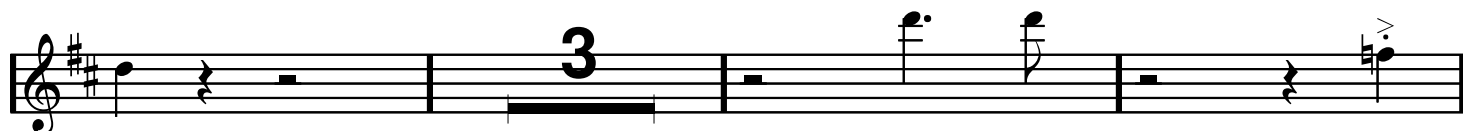
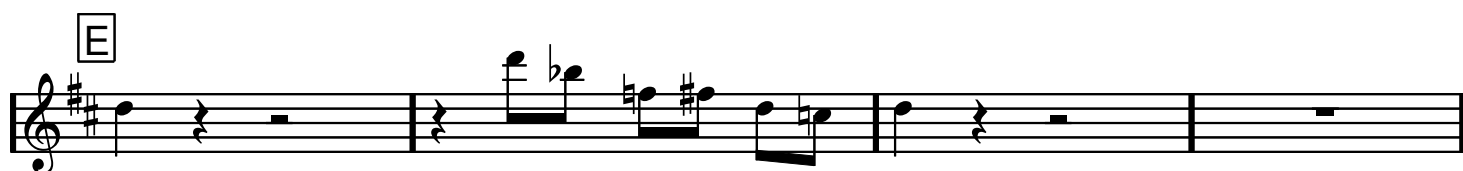
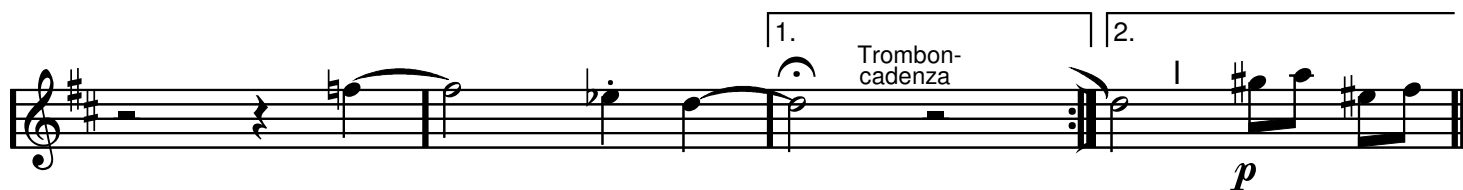
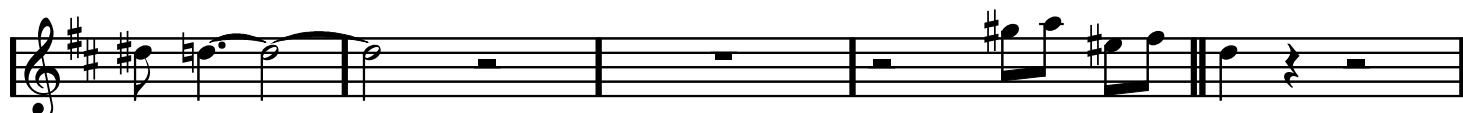
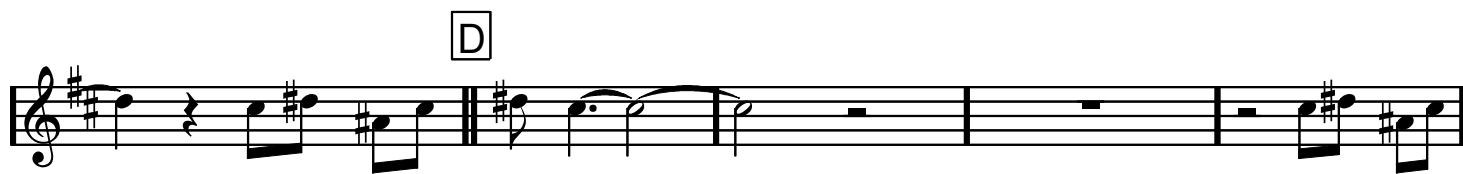
Gliss

Alt 1
Cadenza

FINE

C 1st x alt 1, 2:nd x trb

Big rock, alt 2, sid 2/2



D.S. al fine

Big rock

Bara altsax pickup ---|

1.

2.

B

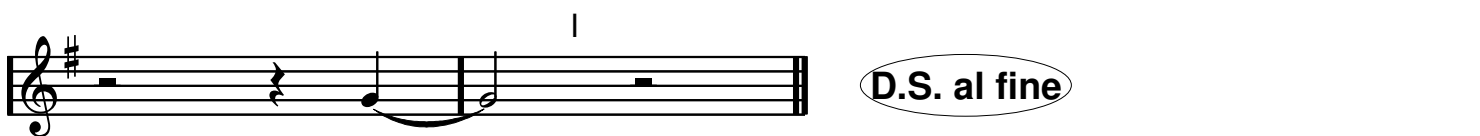
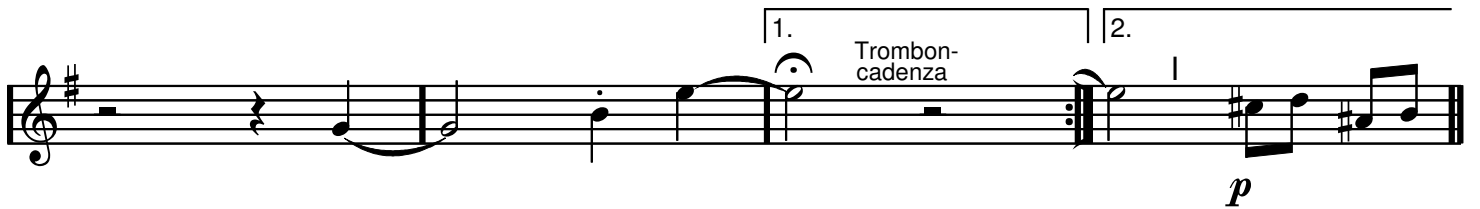
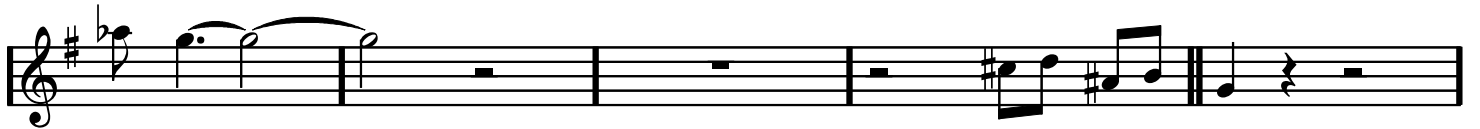
Gliss

Alt 1
Cadenza

FINE

C 1st x alt 1, 2:nd x trb

Big rock, tenorsax, sid 2/2



Big rock

A

Bara altsax pickup ---|

1.

2.

Gliss

Alt 1
Cadenza

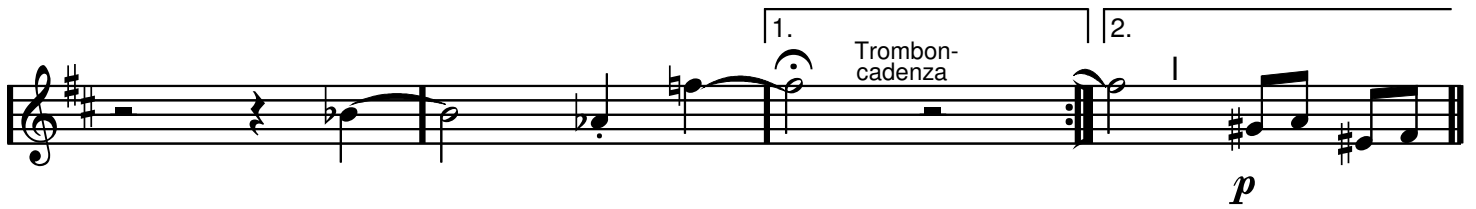
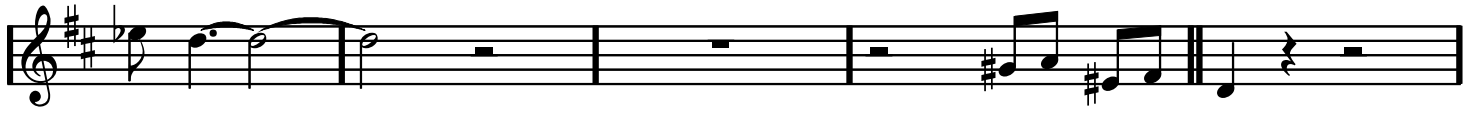
FINE

C 1st x alt 1, 2:nd x trb

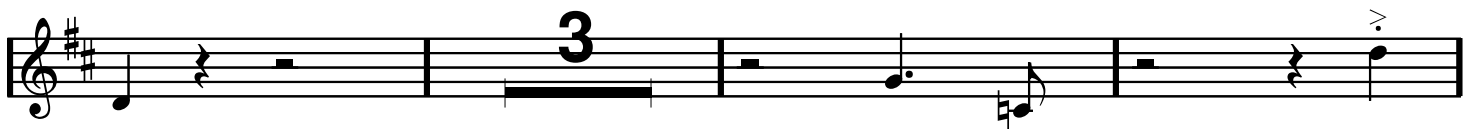
Big rock, barytonsax, sid 2/2



D



E



D.S. al fine

Big rock

A

Bara altsax pickup ---|

1.

2.

B $\$$

Gliss

Alt 1
Cadenza

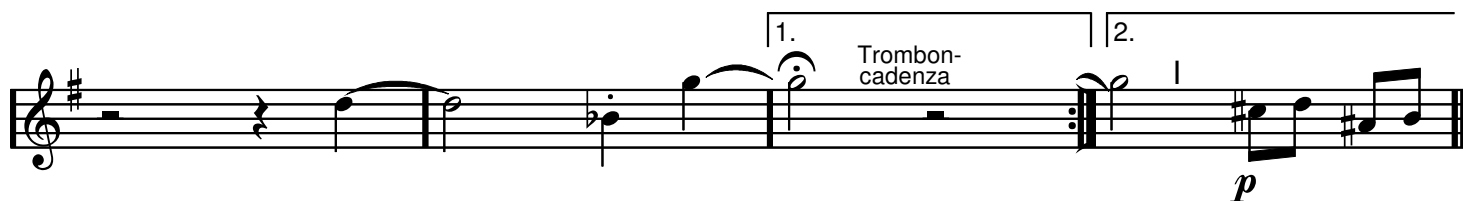
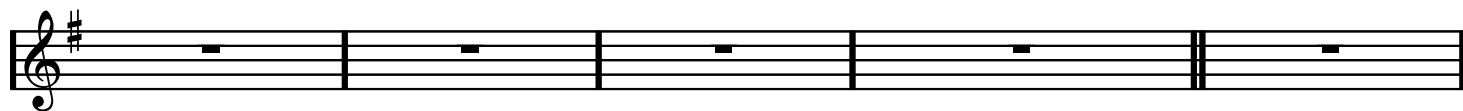
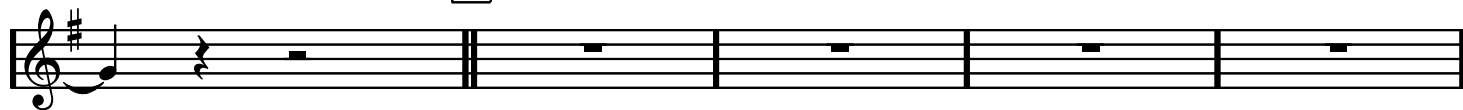
sfz < **FINE**

C 1st x alt 1, 2:nd x trb

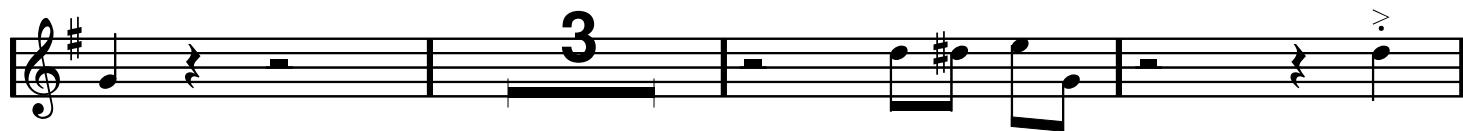
Big rock, trumpet 1, sid 2/2



D Stick



E



D.S. al fine

Big rock

A

Bara altsax pickup ---|

1. ^

2. **B** $\frac{\infty}{\infty}$

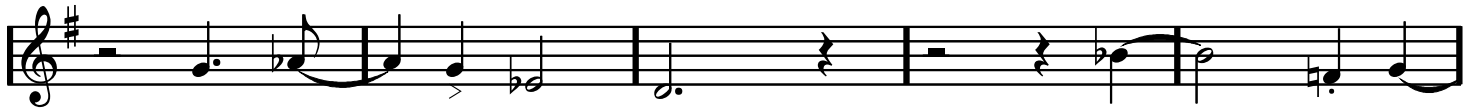
Gliss

Alt 1
Cadenza

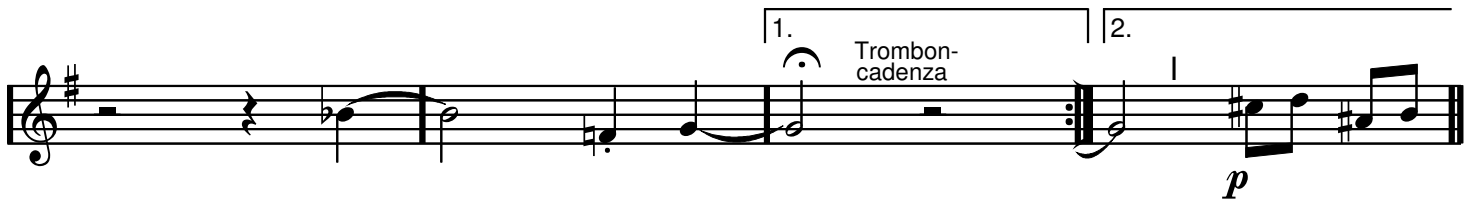
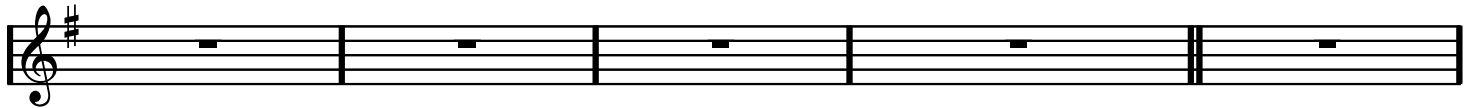
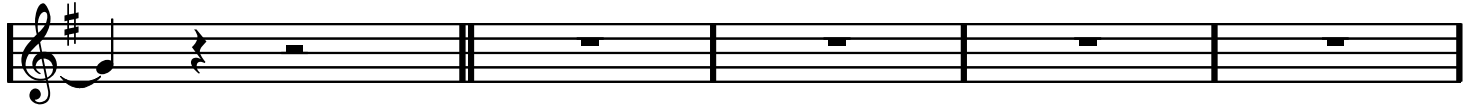
FINE

C 1st x alt 1, 2:nd x trb

Big rock, trumpet 2, sid 2/2



D Stick



D.S. al fine

Big rock

A

Bara altsax pickup ---|

1.

2.

B $\frac{\infty}{\infty}$

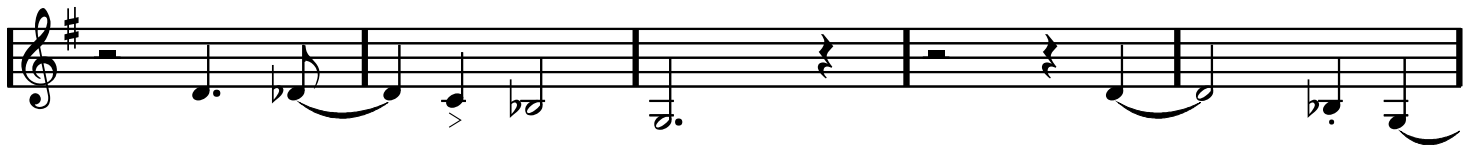
Gliss

Alt 1
Cadenza

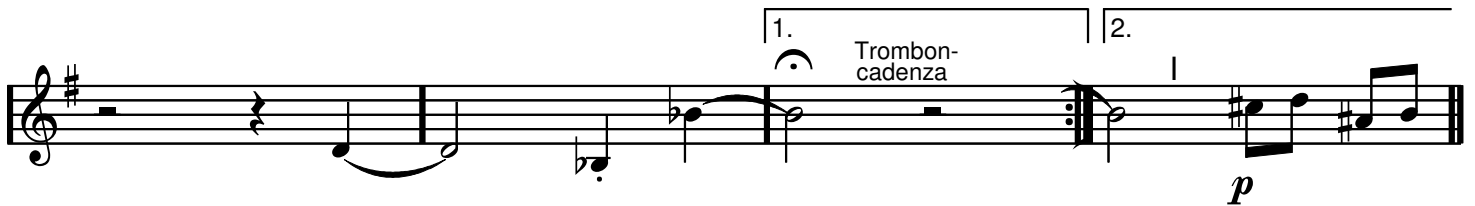
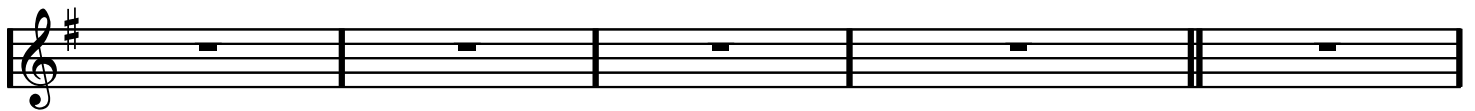
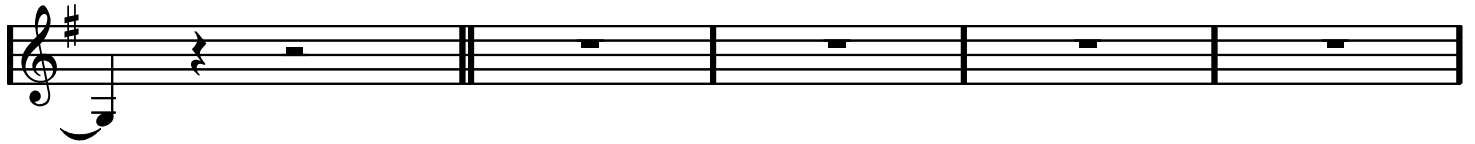
FINE

C 1st x alt 1, 2:nd x trb

Big rock, trumpet 3, sid 2/2



D Stick



D.S. al fine

Big rock

Bara altsax pick up! ----|

Gliss.....

(Spela denna ton endast i reprisen)

(Spela båda gångerna)

(8:va?) ---|

BIG ROCK, Trombon, sida 2/2

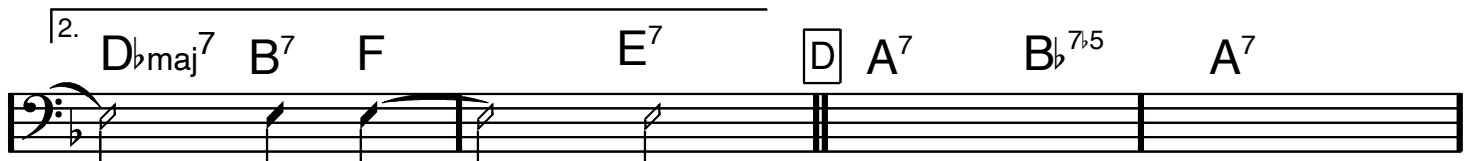
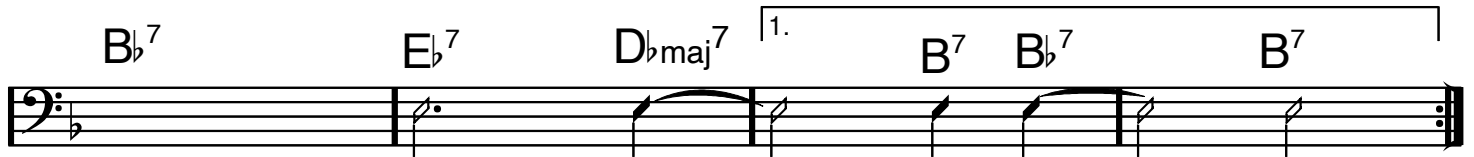
Tuta i luren!
Cadenza dig. SOLO PICK UP
a' tempo:



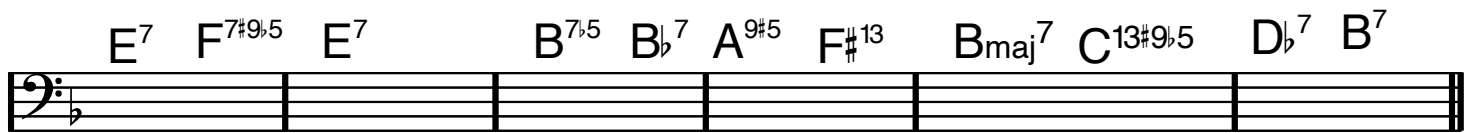
(Bb7)



(1st x) Solo ad lib 32 takter



Sticket



p



f



DA SEGNO
AL FINE

Big rock

Bara altsax pickup ---|

C 1st x alt 1, 2:nd x trb

Big rock, bastrombon, sid 2/2

First musical staff in bass clef, key of B-flat, 2/2 time. It contains several measures of music, including eighth and quarter notes with accents (>) and slurs.

D Stick

Second musical staff in bass clef, mostly containing rests.

Third musical staff in bass clef, mostly containing rests.

Fourth musical staff in bass clef, mostly containing rests.

Fifth musical staff in bass clef, featuring a first ending bracket labeled "1." with "trombon 1" and "cadenza" above it. It includes a second ending bracket labeled "2." and a dynamic marking *p* (piano).

E Trummor

Sixth musical staff in bass clef, containing rhythmic patterns and notes.

Seventh musical staff in bass clef, containing rhythmic patterns and notes, ending with a dynamic marking *f* (forte).

Eighth musical staff in bass clef, featuring a triplet of eighth notes indicated by a "3" above a bracket.

Ninth musical staff in bass clef, concluding the piece with a double bar line.

D.S. al fine

Big rock

Bb7 (H7) **A** F Ab7 Db7 H13b5 Bb7 A7 Ab7#9 G7#9 H13b5

Enbart altsax-pickup---l

Bb9 Eb7 Ab7 Dbmaj7 ^{1.} H13 Bb9 H7

^{2.} H13 F E7 **B** A7 Bb7b5 A7 Bb13

E7 F7b5 E7 H7b5 Bb9 A9 (#5b5) Ab13 Gb13

Hmaj7 C13 (#9b5) Db7 H7 F Ab7 Db7 H13b5

(ev. ett C?)

Bb7 A7 Ab7#9 G7#9 H13b5 Bb9 Eb7 Ab7 Dbmaj7

H13 Bb9 Altsax pickup **C** 1) altsolo 2) trombonsolo F Ab7 Db7 H13b5

FINE

Bb7 A7#9 Ab7#9 G7#9 H13b5 Bb9 Eb9 Dbmaj7

H13 Bb9 H7 F Ab7 Db7 H13b5

BIG ROCK, bas, sida 2/2

Bb7 A7#9 Ab7#9 G7#9 H13b5 Bb9 Eb9 Dbmaj7

H13 F E7 D A7 Bb7b5 A7 Bb13

Sticket

E7 F7#9b5 E7 H7b5 Bb9 A9 (#5) (b5) Ab13

Hmaj7 C13 (#9) (b5) Db13 H7 F Ab7 Db7 H13b5

Bb7 A7#9 Ab7#9 G7#9 H13b5 Bb9 Eb9 Dbmaj7

H13 Bb9 1. 2.

Trombon pick up

p

E (trummor)

Dbmaj7 Bb9

f

Dbmaj7 (F) E7

DA SEGNO
AL FINE

Big rock

Bb7 (H7) **A**

Altsax pickup

F Ab7 Db7 H13b5 Bb7 A7 Ab7#9 G7#9 H13b5

Bb9 Eb7 Ab7 Dbmaj7 H13 Bb9 H7

1.

B

2.

Dbmaj7 H13 F E7 A7 Bb7b5 A7 Bb13

E7 F7b5 E7 H7b5 Bb9 A9 (#5) (b5) Ab13 Gb13

Hmaj7 C13 (#9b5) Db7 H7 F Ab7 Db7 H13b5

(ev. ett C?)

BIG ROCK, komp, sida 2/3

Bb7 A7 Ab7#9 G7#9 H13b5 Bb9 Eb7 Ab7 Dbmaj7

Altsax pickup C 1) altsolo 2) trombonsolo

H13 Bb9 FINE F Ab7 Db7 H13b5

Bb7 A7#9 Ab7#9 H13b5 Bb9 Eb9 Dbmaj7
G7#9

H13 Bb9 H7 F Ab7 Db7 H13b5

Bb7 A7#9 Ab7 G7 H13b5 Bb9 Eb9 Dbmaj7 H13 F E7

D

Sticket

BIG ROCK, komp, sida 3/3

Musical notation for the first system, measures 1-5. The key signature has one flat (Bb). The notation includes a treble clef and a bass clef. Chord symbols are placed below the staff.

Measures 1-5 Chords: A7 Bb7b5, A7 Bb13, E7 F7#9b5, E7, H7b5 Bb9, A9(#5) Ab13 (b5)

Musical notation for the second system, measures 6-10. The notation includes a treble clef and a bass clef. Chord symbols are placed below the staff.

Measures 6-10 Chords: Hmaj7 C13(#9) (b5), Db13 H7, F Ab7, Db7H13b5, Bb7 A7#9, Ab7 G7 H13

Musical notation for the third system, measures 11-15. The notation includes a treble clef and a bass clef. Chord symbols are placed below the staff. A first and second ending bracket is present over measures 14 and 15. A 'Trombon pick up' instruction is written above the staff in measure 14. A 'p' dynamic marking is present in measure 15.

Measures 11-15 Chords: Bb9, Eb9 Dbmaj7, H13 Bb9, Trombon pick up, p

E

(trummor)

Musical notation for the fourth system, measures 16-20. The notation includes a treble clef and a bass clef. Chord symbols are placed below the staff.

Measures 16-20 Chords: Bb7, Eb9, Dbmaj7

Musical notation for the fifth system, measures 21-25. The notation includes a treble clef and a bass clef. Chord symbols are placed below the staff. A 'f' dynamic marking is present in measure 21.

Measures 21-25 Chords: Bb9, f

Musical notation for the sixth system, measures 26-30. The notation includes a treble clef and a bass clef. Chord symbols are placed below the staff.

Measures 26-30 Chords: Bb7, Eb9, Dbmaj7, (F), E7

DA SEGNO
AL FINE

DRUMS

Titel

BIG ROCK

MUSIC: WÄGE FINÉR
ARR: GUGGE & WÄGE.

ENS-PICKUP

A MELODY LINE

B "DOUBLE" LATIN
BASS-LINE

TRPS

MELODY LINE

FINE

SOLOISTS CADEENZA

DRUMS

2 solon: altsax + trombon

B/6 ROLL



C

(SOLO-PART)

2

Musical staff with notes and 'ROCK BEAT' label

Musical staff with notes and 'ROCK BEAT' label

Musical staff with notes, 'LATIN RHYTHM', and 'DOUBLE FEELING' label

Musical staff with notes and 'ROCK BEAT' label

Musical staff with notes, 'NEW SOLOIST', and 'FROM C' label

Musical staff with notes and 'p' dynamic marking

Musical staff with notes, 'E (DRUMS) SOLO', and 'ens.' marking

Musical staff with notes, 'ens.' markings, and 'f' dynamic marking

Musical staff with notes and '... SOLO ...' text

Musical staff with notes, 'ens.' marking, and a double bar line with a dollar sign

D.S. at fine

Empty musical staves at the bottom of the page