

sidor inkl denna: 13

DISCONNECT ME

f1

k1

alt sax

trp

trb

bas

trum.

(opt. piano)

Disconnect me

Musik:
Text:
Arr: Catta, 2009
Sida 1 av 4



Flöjt

Klarinett

Altsax

Trumpet

Trombon

Bas

Trummor

Flöjt

Klarinett

Altsax

Trumpet

Trombon

Bas

Trummor

B

Musical score for section B, measures 1-5. The score is for a jazz ensemble and includes parts for Flöjt, Klarinett, Altsax, Trumpet, Trombon, Bas, and Trummor. The key signature is B-flat major (two flats) and the time signature is 4/4. The first measure shows the beginning of the section with various rhythmic patterns. The second measure is marked with a double bar line and a repeat sign. The subsequent measures continue the musical development with different instrumental textures.

(B2)

Musical score for section B2, measures 6-10. This section continues the music from the previous system. It features a prominent role for the Flöjt in the first measure, which is marked with a repeat sign. The other instruments provide harmonic support and rhythmic accompaniment. The score concludes with a final measure in the system.

Flöjt
Klarinett
Altsax
Trumpet
Trombon
Bas
Trummor

SOLO
Break

D.
S
al
coda
(med
repris)

This system of a musical score for 'Disconnect me' features seven staves. From top to bottom, they are: Flöjt (Flute), Klarinett (Clarinet), Altsax (Alto Saxophone), Trumpet, Trombon (Trumpet), Bas (Bass), and Trummor (Drums). The score is in 3/4 time and B-flat major. A 'Coda' symbol is placed above the fifth measure. The Trumpet staff has a 'SOLO' marking above the sixth measure. The Drums staff has a 'Break' marking above the sixth measure. To the right of the staves, the lyrics 'D. S al coda (med repris)' are written vertically.

Flöjt
Klarinett
Altsax
Trumpet
Trombon
Bas
Trummor

MELLANSPEL

MELLANSPEL

MELLANSPEL

MELLANSPEL

MELLANSPEL

MELLANSPEL

MELLANSPEL

Break

MELLANSPEL

This system of a musical score for 'Disconnect me' features seven staves. From top to bottom, they are: Flöjt (Flute), Klarinett (Clarinet), Altsax (Alto Saxophone), Trumpet, Trombon (Trumpet), Bas (Bass), and Trummor (Drums). The score is in 3/4 time and B-flat major. A 'Coda' symbol is placed above the first measure. The word 'MELLANSPEL' (Interlude) is written above the second measure of each staff. The Drums staff has a 'Break' marking above the first measure.

Disconnect me, klingande partitur, sida 4/4

C

Flöjt
Klarinett
Altsax
Trumpet
Trombon
Bas
Trummor

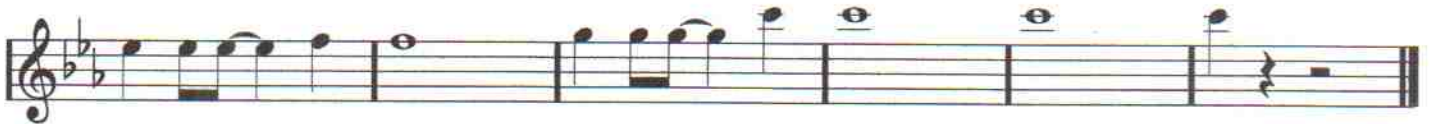
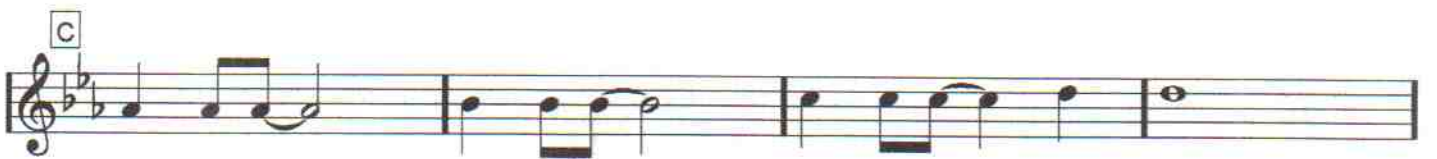
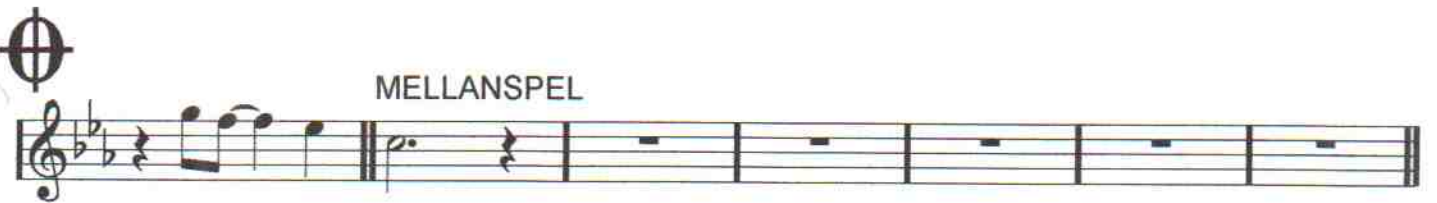
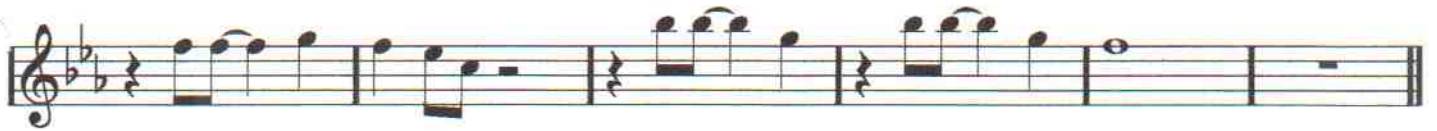
This system of the musical score covers measures 1 through 5. The Flöjt and Klarinett parts are silent in measures 1 and 2, then enter in measure 3 with a melodic line. The Altsax, Trumpet, and Trombon parts also enter in measure 3. The Bas part has a steady bass line. The Trummor part is silent throughout this system.

Flöjt
Klarinett
Altsax
Trumpet
Trombon
Bas
Trummor

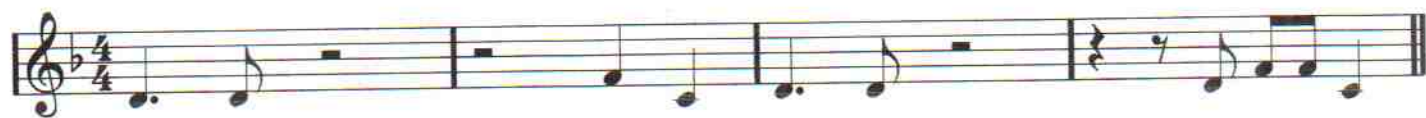
This system of the musical score covers measures 6 through 10. The Flöjt part continues its melodic line. The Klarinett part enters in measure 6. The Altsax, Trumpet, and Trombon parts continue their parts. The Bas part continues its bass line. The Trummor part is silent throughout this system.

Flöjt

Disconnect me



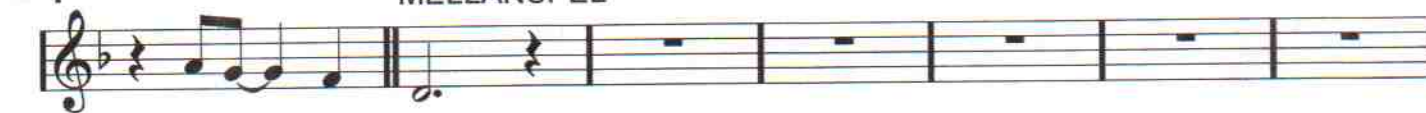
Disconnect me



D.S. al coda
med repris

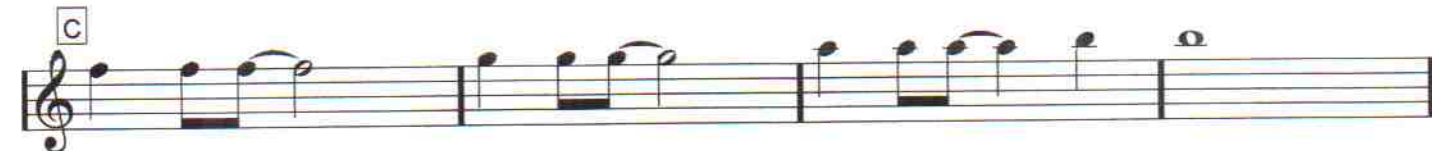
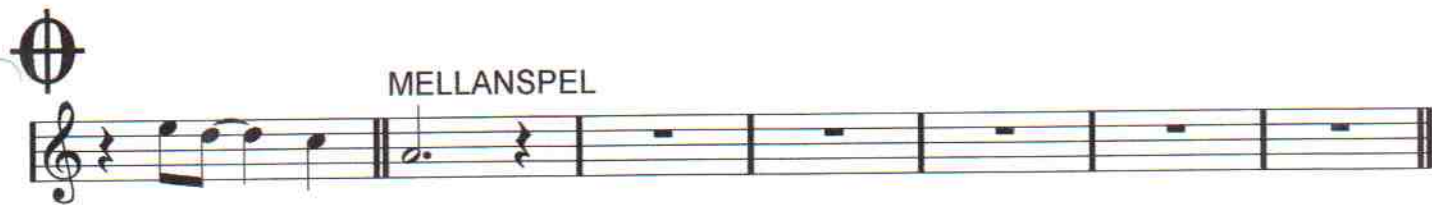


MELLANSPEL



Altsax

Disconnect me



Trombon

Disconnect me



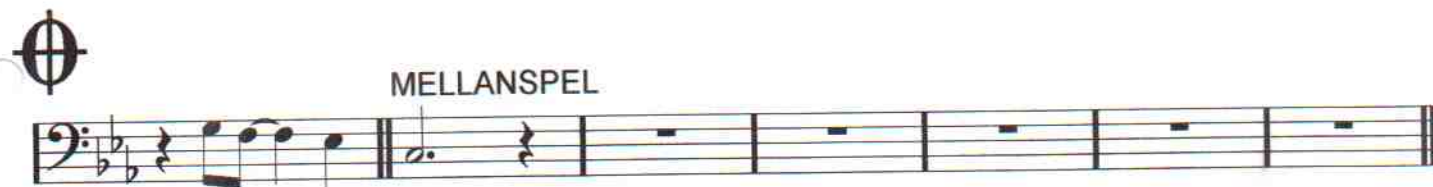
§ A



B

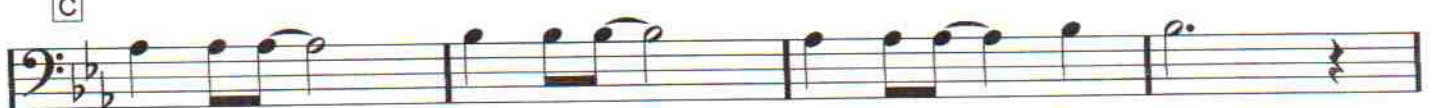


D.S. al coda
med repris



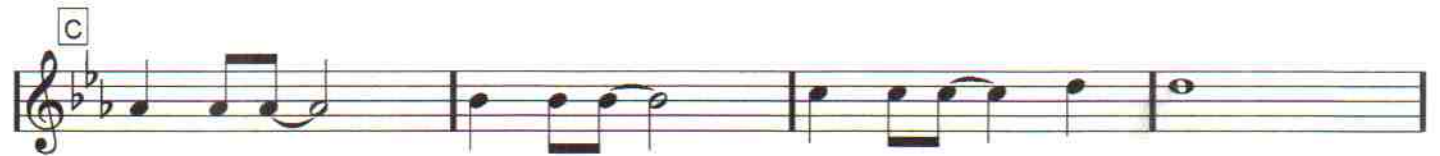
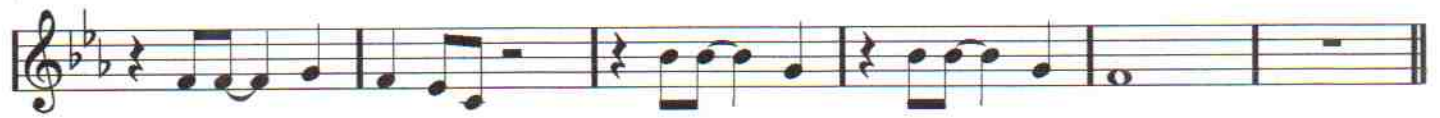
MELLANSPEL

C



Mallets 1

Disconnect me



Disconnect me

BAS

Handwritten musical score for the piece "Disconnect me" by BAS. The score is written in 9/8 time and consists of nine staves of music. The key signature is one flat (Bb). The score includes various musical notations such as notes, rests, and bar lines. Handwritten in blue ink are the following elements:

- Chord symbols: Cm, G, Gsus, Fb, Fm, G/H, Ab, F/A, Cm/Bb, G/H, Fm, Gm.
- Section markers: A square box containing 'C', a square box containing 'B', and a square box containing 'A'.
- Tempo/Performance instructions: "MELLANSPEL" and "D.S. al coda med rept's".
- Other markings: A circled cross symbol and a circled 'X' symbol.

D.S. al coda
med rept's

MELLANSPEL

Cm/G

Fb

Cm/G

Fb

Cm

G/H

Fb

Fb

Fb

Cm

G/H

Fb

Fb

Fb

Cm

Fb

Fb

Fb

Cm

B

Fb

Ab

G

Fb

Fb

Gm

Fm

F/A

Cm/Bb

G/H

Cm

A

Cm

