

# MY HEART WILL GO ON

Titanic (Daniella-Isolde-Emma)

James Horner / Will Jennings (arr Dicken Hedrenius 2024)

♩ = 98 **INTRO**  
(du har melodin)

Trumpet 1

Trumpet 2

Trombon

Komp

trp 1 Cm Bb Ab Bb(sus4) Cm  
(eller kanske inte - i originalet ligger en urbasig synt, men på piao blir det mer som ett fullt Eb6...)

Långt Eb i basen, hela intron

6 **1a**

Trp 1

Trp 2

Trb

SOLO

komp

Bb Ab Bb Eb Bb/Eb Ab/Eb Eb Bb

13 1b

Trp 1

Trp 2

Trb

komp

E $\flat$  B $\flat$ /F B $\flat$ (sus4)/A $\flat$  Cm B $\flat$  A $\flat$  B $\flat$

21

Trp 1

Trp 2

Trb

komp

Cm B $\flat$  A $\flat$  Gm<sup>7</sup>/A $\flat$  B $\flat$ <sup>7</sup> Cm B $\flat$

27

Trp 1

Trp 2

Trb

komp

Ab Bb Cm Gm Ab Bb(sus4) Bb

MELLANSPEL 1

(du har melodin)

33

2a

Trp 1

Trp 2

Trb

SOLO

Cm Bb Ab Bb Eb Trombon Bb/Eb Ab/Eb Eb Bb

trp 1

komp

41 2b

Trp 1

Trp 2

Trb

komp

E $\flat$  B $\flat$ /F B $\flat$ (sus4)/A $\flat$  Cm B $\flat$  A $\flat$  B $\flat$

49

Trp 1

Trp 2

Trb

komp

Cm B $\flat$  A $\flat$  Gm<sup>7</sup>/A $\flat$  B $\flat$ <sup>7</sup> Cm B $\flat$

55

Trp 1

Trp 2

Trb

komp

$A\flat$   $B\flat$  Cm Gm  $A\flat$   $B\flat^{(sus4)}$   $B\flat_{trp\ 1}$

*p*

61

MELLANSPEL 2  
(du har melodin)

Trp 1

Trp 2

Trb

komp

Cm (trp 1 resten av låten)  $B\flat$   $A\flat$   $B\flat^{(sus4)}$  Cm  $B\flat$

*p*

67 3a

Trp 1

Trp 2

Trb

komp

*f* *f* *f*

Ab Eb/G Fm Em D C D

73 3b

Trp 1

Trp 2

Trb

komp

Em D C D(sus4) D Em D

79

Trp 1

Trp 2

Trb

komp

C D Em D C D(sus4) D

85 **OUTRO**

Trp 1

Trp 2

Trb

komp

G D/G C/G D/G

89

Trp 1

Trp 2

Trb

komp

G D/G C/G D/G G



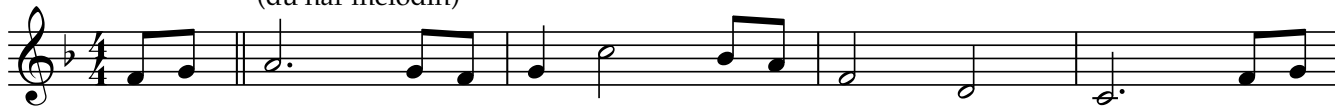
Trumpet 1

# MY HEART WILL GO ON

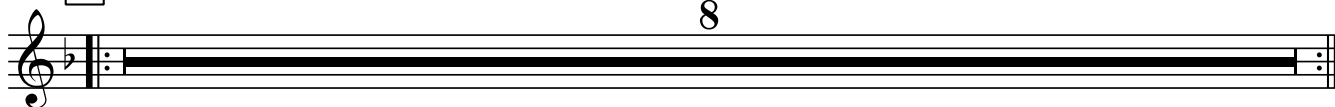
Titanic (Daniella-Isolde-Emma)

James Horner / Will Jennings (arr Dicken Hedrenius 2024)

♩ = 98 **INTRO**  
(du har melodin)



1a



1b

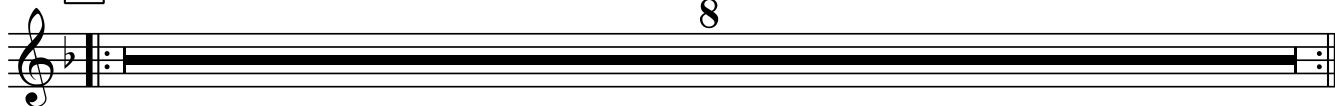


**MELLANSPEL 1**

(du har melodin)



2a



2b



MY HEART WILL GO ON trumpet 1 sida 2 av 2

Musical staff with notes and a dynamic marking *p*.

MELLANSPEL 2

(du har melodin)

Musical staff for the interlude section.

Musical staff with a double bar line and key signature change.

3a

Musical staff for section 3a with a dynamic marking *f*.

Musical staff for section 3a continuation.

3b

Musical staff for section 3b.

Musical staff for section 3b continuation.

OUTRO

Musical staff for the outro section.

Musical staff for the outro section continuation.

Trumpet 2

# MY HEART WILL GO ON

Titanic (Daniella-Isolde-Emma)

sida 1 av 2

James Horner / Will Jennings (arr Dicken Hedrenius 2024)

INTRO

♩ = 98

Musical staff in 4/4 time, F major key signature. It begins with a treble clef, a key signature of one flat (F major), and a 4/4 time signature. The piece starts with two whole rests, followed by a whole note sequence: F4, A4, Bb4, D5, C5, Bb4, A4, F4. The piece concludes with a double bar line.

1a SOLO

Musical staff in 4/4 time, F major key signature. It begins with a treble clef and a key signature of one flat. The piece starts with a double bar line, followed by a repeat sign. The melody consists of eighth notes: F4, G4, A4, Bb4, C5, Bb4, A4, G4, F4, followed by quarter notes: G4, A4, Bb4, C5, Bb4, A4, G4, F4. The piece ends with a long note on F4, which is beamed to the next staff's first note, and a double bar line.

1b

Musical staff in 4/4 time, F major key signature. It begins with a treble clef and a key signature of one flat. The melody consists of quarter notes: G4, A4, Bb4, C5, Bb4, A4, G4, F4, followed by eighth notes: G4, A4, Bb4, C5, Bb4, A4, G4, F4, followed by a whole note: G4. The piece ends with a double bar line.

Musical staff in 4/4 time, F major key signature. It begins with a treble clef and a key signature of one flat. The melody consists of quarter notes: G4, A4, Bb4, C5, Bb4, A4, G4, F4, followed by eighth notes: G4, A4, Bb4, C5, Bb4, A4, G4, F4, followed by a whole note: G4. The piece ends with a double bar line.

MELLANSPEL 1

Musical staff in 4/4 time, F major key signature. It begins with a treble clef and a key signature of one flat. The piece consists of four whole notes: F4, A4, Bb4, D5, followed by a double bar line.

2a

Musical staff in 4/4 time, F major key signature. It begins with a treble clef and a key signature of one flat. The staff contains a whole rest followed by a thick black bar with a fermata-like shape above it, and the number '8' centered above the bar. The piece ends with a double bar line.

2b

Musical staff in 4/4 time, F major key signature. It begins with a treble clef and a key signature of one flat. The piece consists of a whole rest, followed by quarter notes: G4, A4, Bb4, C5, Bb4, A4, G4, followed by a long note on F4, which is beamed to the next staff's first note, and a double bar line.

Musical staff in 4/4 time, F major key signature. It begins with a treble clef and a key signature of one flat. The piece consists of a whole rest, followed by quarter notes: G4, A4, Bb4, C5, Bb4, A4, G4, followed by a long note on F4, which is beamed to the previous staff's last note, and a double bar line.

MY HEART WILL GO ON trumpet 2 sida 2 av 2

A musical staff in treble clef with a key signature of one flat. The first measure contains a quarter rest, followed by quarter notes G4, F4, and E4. The second measure contains a quarter rest, followed by a dotted quarter note D4. A double bar line follows, with the number '2' centered above the staff.

MELLANSPEL 2

A musical staff in treble clef with a key signature of one flat. The first measure contains a piano (*p*) dynamic marking and a half note G4. The second measure contains a half note F4. The third measure contains a half note E4. The fourth measure contains a dotted half note D4. The fifth measure contains a quarter rest, followed by a quarter note C4. The sixth measure contains a quarter note B3. The seventh measure contains a quarter note A3. The eighth measure contains a quarter note G3. The ninth measure contains a quarter note F3. The tenth measure contains a quarter note E3. The staff ends with a double bar line and a key signature change to three sharps (F#, C#, G#).

3a

A musical staff in treble clef with a key signature of three sharps (F#, C#, G#). The first measure contains a forte (*f*) dynamic marking and a half note G4. The second measure contains a half note F4. The third measure contains a half note E4. The fourth measure contains a dotted half note D4. The fifth measure contains a quarter rest, followed by a quarter note C4. The sixth measure contains a quarter note B3. The seventh measure contains a quarter note A3. The eighth measure contains a quarter note G3. The ninth measure contains a quarter note F3. The staff ends with a double bar line.

3b

A musical staff in treble clef with a key signature of three sharps (F#, C#, G#). The first measure contains a half note G4. The second measure contains a half note F4. The third measure contains a half note E4. The fourth measure contains a dotted half note D4. The fifth measure contains a quarter rest, followed by a quarter note C4. The sixth measure contains a quarter note B3. The seventh measure contains a quarter note A3. The eighth measure contains a quarter note G3. The ninth measure contains a quarter note F3. The staff ends with a double bar line.

OUTRO

A musical staff in treble clef with a key signature of three sharps (F#, C#, G#). The first measure contains a quarter rest. The second measure contains a quarter note G4. The third measure contains a quarter note F4. The fourth measure contains a quarter note E4. The fifth measure contains a dotted half note D4. The sixth measure contains a quarter rest, followed by a quarter note C4. The seventh measure contains a quarter note B3. The eighth measure contains a quarter note A3. The ninth measure contains a quarter note G3. The staff ends with a double bar line.

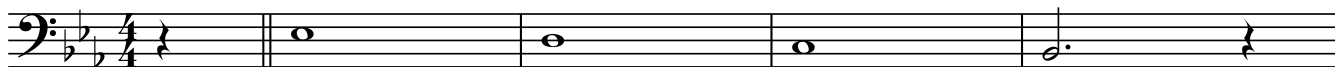
A musical staff in treble clef with a key signature of three sharps (F#, C#, G#). The first measure contains a half note G4. The second measure contains a half note F4. The third measure contains a half note E4. The fourth measure contains a dotted half note D4. The fifth measure contains a quarter rest, followed by a quarter note C4. The sixth measure contains a quarter note B3. The seventh measure contains a quarter note A3. The eighth measure contains a quarter note G3. The staff ends with a double bar line.

# MY HEART WILL GO ON

Titanic (Daniella-Isolde-Emma)

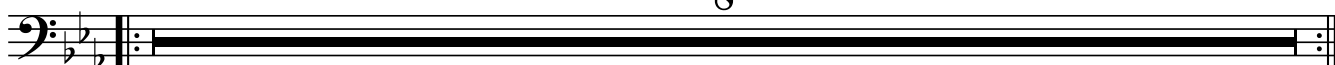
James Horner / Will Jennings (arr Dicken Hedrenius 2024)

♩ = 98 INTRO



1a

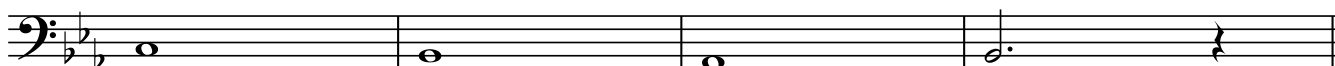
8



1b



MELLANSPEL 1



2a SOLO



2b



MY HEART WILL GO ON trombon sida 2 av 2



MELLANSPEL 2



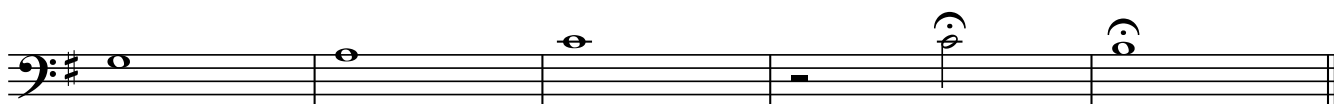
3a



3b



OUTRO



# MY HEART WILL GO ON

Titanic (Daniella-Isolde-Emma)

James Horner / Will Jennings (arr Dicken Hedrenius 2024)

**INTRO**

♩ = 98

Cm

Bb

Ab

Bb(sus4)

trp 1

Långt Eb i basen, hela intron  
(eller kanske inte - i originalet ligger en  
urbasig synt, men på piano blir det mer som ett fullt Eb6...)

Cm

Bb

Ab

Bb

**1a** Eb

Bb/Eb

Ab/Eb

Eb

Bb

Eb

Bb/F

Bb(sus4)/Ab

Trp 2

**1b** Cm

Bb

Ab

Bb

Cm

Bb

Ab

Gm7/Ab Bb7

Cm

Bb

Ab

Bb

Cm

Gm

Ab

Bb(sus4) Bb

**MELLANSPEL 1**

Cm

Bb

Ab

Bb

trp 1

**2a** Eb

Bb/Eb

Ab/Eb

Eb

Bb

Eb

Bb/F

Bb(sus4)/Ab

Trombon

**2b** Cm

Bb

Ab

Bb

Cm

Bb

Ab

Gm7/Ab Bb7

Cm

Bb

Ab

Bb

Cm

Gm

Ab


Bb(sus4) Bb

*p*  
trp 1

MY HEART WILL GO ON komp sida 2 av 2

MELLANSPEL 2

Cm B $\flat$  A $\flat$  B $\flat$ (sus4) Cm B $\flat$  A $\flat$  Eb/G Fm



(trp 1 resten av låten)

Musical notation for Mellanspel 2, featuring a treble clef, a key signature of two flats (B-flat and E-flat), and a common time signature. The melody consists of eighth and quarter notes. The piece concludes with a double bar line and a sharp sign on the staff.

3a Em D C D Em D C D(sus4) D



Musical notation for section 3a, featuring a treble clef, a key signature of one sharp (F-sharp), and a common time signature. The melody consists of quarter and eighth notes.


3b Em D C D Em D C D(sus4) D



Musical notation for section 3b, featuring a treble clef, a key signature of one sharp (F-sharp), and a common time signature. The melody consists of quarter and eighth notes.


OUTRO

G D/G C/G D/G



Musical notation for the first line of the Outro, featuring a treble clef, a key signature of one sharp (F-sharp), and a common time signature. The melody consists of quarter notes with a slur over the first two notes.

G D/G C/G D/G G



Musical notation for the second line of the Outro, featuring a treble clef, a key signature of one sharp (F-sharp), and a common time signature. The melody consists of quarter notes with a slur over the first three notes and a fermata over the final note.