

Military March No. 1

F. Schubert

Trombone CD 87

Playalong CD 88

$\text{♩} = 110$

Musical score for Trombone, Military March No. 1 by F. Schubert. The score is in bass clef, 2/4 time, and B-flat major. It consists of six staves of music. The first staff starts with a measure rest and a box containing the number 6. The second staff begins at measure 9. The third staff has first and second endings at measures 17 and 18, followed by a box containing the number 8. The fourth staff begins at measure 25. The fifth staff begins at measure 33. The sixth staff has first and second endings at measures 41 and 42, followed by a box containing the number 7.

Dreaming

R. Schumann

Trombone CD 89

Playalong CD 90

$\text{♩} = 65$

Musical score for Trombone, Dreaming by R. Schumann. The score is in bass clef, 4/4 time, and B-flat major. It consists of six staves of music. The first staff starts with a measure rest. The second staff begins at measure 5. The third staff begins at measure 9. The fourth staff begins at measure 13. The fifth staff begins at measure 17. The sixth staff begins at measure 21 and includes tempo markings of $\text{♩} = 63$ and $\text{♩} = 60$.

Military March No. 1

F. Schubert

$\text{♩} = 110$ Trombone **CD 87** Playalong **CD 88**

3 1 2 4 2 4 1 4 2 6 4 6 3 1 2 1 3 2 1 3 1 2 1 2

9 4 4 4 1 4 2 1 3 4 2 1 2 4 1 4 4 1 4 2 1 3 4 3 1 2

17 1. 3 2. 3 8 2 3 1 3 1 3 4 3 1 3 4 3 1 3 2 1 2 3

25 1 3 1 2 1 3 1 2 1 3 1 1 1 2 5 4 2 1 4 3 1 3 1 2 3 3 1 2

33 4 2 4 1 4 2 6 4 6 6 1 2 1 3 2 1 3 1 2 1 2 4 4 4 1 4

41 2 1 3 4 2 1 2 4 1 4 4 1 4 2 1 3 2 1 4 2 1. 1 2. 1 7

Dreaming

R. Schumann

$\text{♩} = 65$ Trombone **CD 89** Playalong **CD 90**

4 6 7 6 2 4 3 3 4 2 4 3 4 2 1 2 6 4 2 4 4 4

5 6 7 6 2 4 2 2 1 3 4 3 2 2 3 4 1 2 4 4 4

9 6 7 6 2 4 1 1 2 4 1 2 4 2 1 2 4 2 2 6

13 1 2 1 2 3 1 1 2 1 3 2 2 4 3 4 2 2 2 4

17 6 7 6 2 4 3 3 4 2 4 3 4 2 1 2 6 4 2 4 4 4

21 6 7 6 2 4 2 2 1 3 2 4 =63 3 4 2 1 2 4 2 1 =60 2 2 7 6

Aida, "Triumphal March"

G. Verdi

Trombone **CD** 109

Playalong **CD** 110

♩ = 100



Aida, "Triumphal March"

G. Verdi

Trombone **CD** 109

Playalong **CD** 110

F[♯] Clar
F[♯] SS $\text{♩} = 100$

4 4 2 4 2 4 4 4 4 3 4 4 2 4 2 4 4 2 4 2 4

5 4 2 4 4 4 2 2 4 4 2 4 2 4 4 4 4 3 4

4 2 4 2 4 4 2 4 2 4 4 2 4 4 2 4 2 4 4 4 4

2 4 4 4 4 2 4 4 4 4 2 1 1 2 2 4 4 4 4 4 4

4 2 4 2 4 4 4 4 4 3 4 4 2 4 2 4 4 2 4 2 4

4 2 4 4 2 4 2 4 4 4 4 2 4 4 4 4 4 2 4 4 4 4

2 1 1 2 2 4 4 4 4 4 4 4 4

4 2 4 2 4 4 4 4 3 4 4 2 4 2 4 4 2 4 2 4

4 2 4 4 2 4 2 4 4 4 4 4

Rigoletto, "La donna é mobile (The woman is fickle)"

G. Verdi

Trombone CD 115

Playalong CD 116

♩ = 130

Musical score for Trombone CD 115 and Playalong CD 116, Rigoletto "La donna é mobile". The score is in bass clef with a key signature of one sharp (F#) and a 3/4 time signature. It consists of six staves of music. The first staff starts at measure 1. The second staff starts at measure 7. The third staff starts at measure 13. The fourth staff starts at measure 19 and includes a triplet of eighth notes. The fifth staff starts at measure 25 and includes two triplets of eighth notes. The sixth staff starts at measure 30 and includes four triplets of eighth notes. The piece concludes with a double bar line at the end of the sixth staff.

Carmen, "Toreador Song"

G. Bizet

Trombone CD 117

Playalong CD 118

♩ = 100

Musical score for Trombone CD 117 and Playalong CD 118, Carmen "Toreador Song". The score is in bass clef with a key signature of two flats (Bb, Eb) and a 4/4 time signature. It consists of six staves of music. The first staff starts at measure 1. The second staff starts at measure 6 and includes two triplets of eighth notes. The third staff starts at measure 11 and includes a triplet of eighth notes. The fourth staff starts at measure 16. The fifth staff starts at measure 21 and includes three triplets of eighth notes. The sixth staff starts at measure 25. The piece concludes with a double bar line at the end of the sixth staff.

Rigoletto, "La donna é mobile (The woman is fickle)"

G. Verdi

(F#) 4/4
F#5

♩ = 130

Trombone CD 115 Playalong CD 116

Diss
(Ess)

Carmen, "Toreador Song"

G. Bizet

♩ = 100

Trombone CD 117 Playalong CD 118

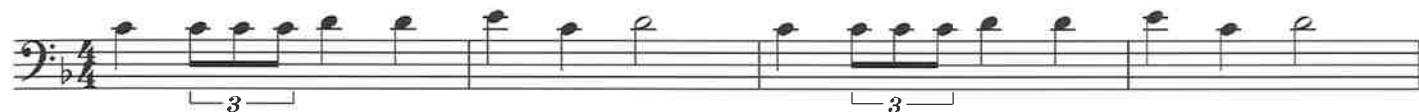
The Nutcracker, "March"

P. Tchaikovsky

Trombone **CD** 121

Playalong **CD** 122

♩ = 120



The Nutcracker, "Dance of the Reed Flutes"

P. Tchaikovsky

Trombone **CD** 123

Playalong **CD** 124

♩ = 110



The Nutcracker, "March"

P. Tchaikovsky

Trombone CD 121 **Playalong CD 122**

$\text{♩} = 120$

3 3 3 1 1 2 3 1 3 3 3 3 1 1 2 3 1

5 1 3 1 2 4 1 2 6 2 1 2 4 1 2 4 1 2 4 5 4 1 2 4 2 1 2 4 1 3

9 3 3 3 3 1 1 2 3 1 3 3 3 3 1 1 2 3 1

13 1 3 1 2 4 1 2 4 3 1 3 1 2 4 1 2 1 3 1 2 1 3 2 1 2 1 2 1

17 2 2 2 2 1 4 1 4 2

21 2 2 2 2 1 4 1 4 2

D.C. al fine

The Nutcracker, "Dance of the Reed Flutes"

P. Tchaikovsky

Trombone CD 123 **Playalong CD 124**

$\text{♩} = 110$

2 1 2 1 2 4 1 2 1 2 4 1 6 2 6 1 2

5 4 4 4 4 6 4 4 4 4 6 1 1 1 1 2 4 1 1 3 4 6

9 1 2 1 2 1 2 4 1 2 1 2 4 1 6 2 6 1 2

13 4 4 4 4 6 4 4 4 4 6 1 5 1 4 1 2 6 2 4 2 3 1 2 3 1 1