

Komp i F 22 EGREMONT RUSSET BLUES

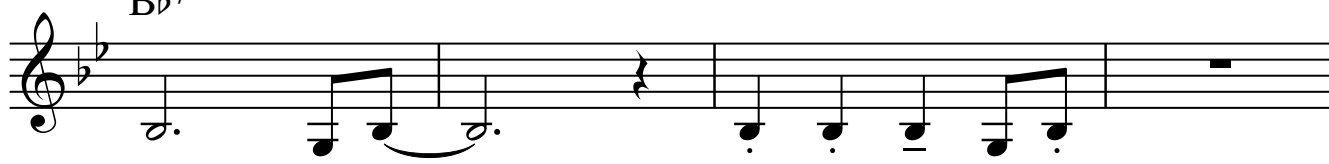
Shuffleblues i Bess (klingande F)

Jan Utbult

Förspel
Bb⁷



REFRÄNG
Bb⁷



Eb⁷

Bb⁷



F⁷

Eb⁷

Bb⁷



Mellanspel

Bb⁷



Eb⁷

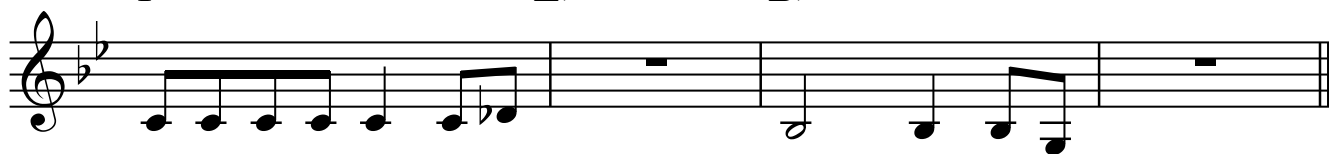
Bb⁷



F⁷

Eb⁷

Bb⁷



SPELA REFRÄNGEN IGEN!