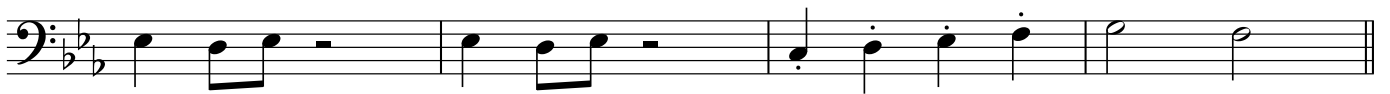
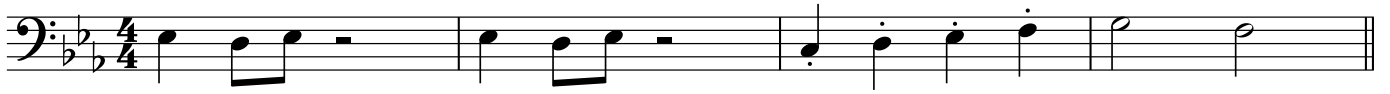


Ellison's Orange

Jan Utbult



Ellison's Orange

Jan Utbult

First line of bass clef musical notation. The key signature has two flats (B-flat and E-flat) and the time signature is 4/4. The notation consists of four measures. The first two measures each contain a quarter note followed by an eighth note beamed to its right, then a quarter rest. The third measure contains a dotted quarter note, a dotted quarter note, a dotted quarter note, and a dotted quarter note. The fourth measure contains a half note and a half note. Fingering numbers are written below the notes: 3 4 3, 3 4 3, 6 4 3 1, 4 1.

Second line of bass clef musical notation. The notation consists of four measures. The first two measures each contain a quarter note followed by an eighth note beamed to its right, then a quarter rest. The third measure contains a dotted quarter note, a dotted quarter note, a dotted quarter note, and a dotted quarter note. The fourth measure contains a half note and a quarter rest. Fingering numbers are written below the notes: 3 4 3, 3 4 3, 3 3 4 4, 1.

Third line of bass clef musical notation. The notation consists of four measures. The first two measures each contain a quarter note followed by an eighth note beamed to its right, then a quarter rest. The third measure contains a dotted quarter note, a dotted quarter note, a dotted quarter note, and a dotted quarter note. The fourth measure contains a half note and a half note. Fingering numbers are written below the notes: 3 4 3, 3 4 3, 6 4 3 1, 4 1.

Fourth line of bass clef musical notation. The notation consists of four measures. The first two measures each contain a dotted quarter note, a dotted quarter note, a dotted quarter note, and a dotted quarter note. The third measure contains a dotted quarter note, a dotted quarter note, a dotted quarter note, and a dotted quarter note. The fourth measure contains a half note with a slur over it and a quarter rest. Fingering numbers are written below the notes: 3 3 4 4, 1 1 3 4, 3.