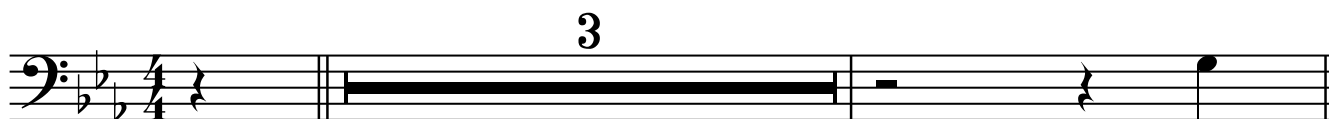


Trombon

23 EN LÅNG VÄG ATT GÅ

Jan Utbult



REFRÄNG



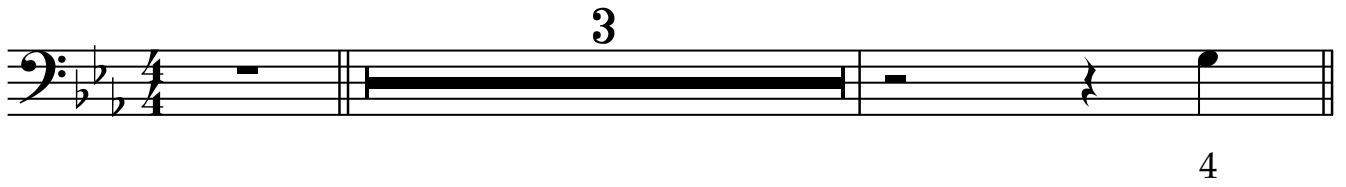
(sluta här i reprisen)



Trombon 23 EN LÅNG VÄG ATT GÅ

Jan Utbult

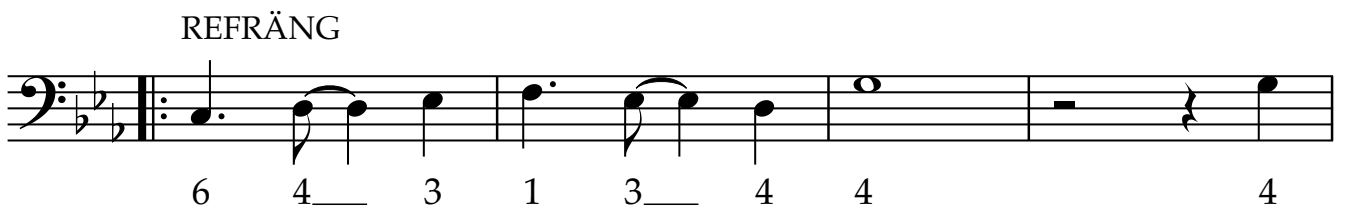
3



4

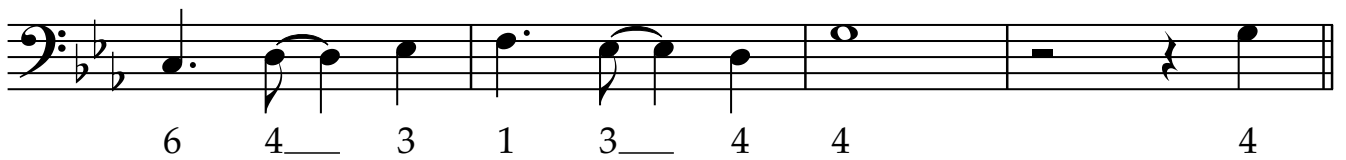
Detailed description: A single musical staff in bass clef with a key signature of two flats and a 4/4 time signature. It begins with a 3-measure rest, indicated by a large '3' above the staff. The staff then continues with a final quarter note and a double bar line.

REFRÄNG



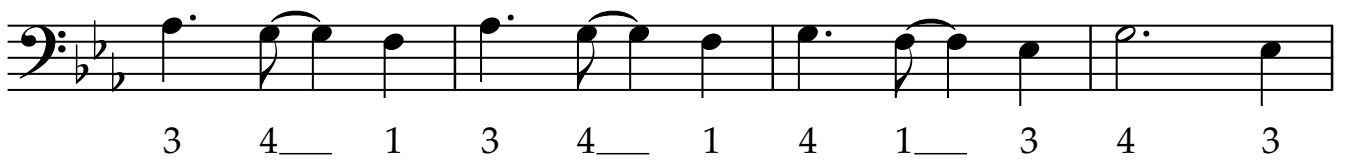
6 4 3 1 3 4 4 4

Detailed description: The first line of the refrain, starting with a repeat sign. The notes are G2, F2, E2, D2, C2, B1, A1, G1. Fingerings are indicated below the notes: 6, 4, 3, 1, 3, 4, 4, 4.



6 4 3 1 3 4 4 4

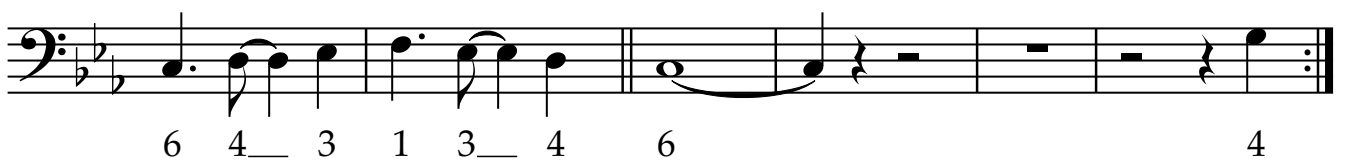
Detailed description: The second line of the refrain, continuing the sequence of notes and fingerings from the first line.



3 4 1 3 4 1 4 1 3 4 3

Detailed description: The third line of the refrain, continuing the sequence of notes and fingerings.

(sluta här i reprisen)



6 4 3 1 3 4 6 4

Detailed description: The fourth line of the refrain, concluding with a double bar line and repeat dots. The notes are G2, F2, E2, D2, C2, B1, A1, G1. Fingerings are indicated below the notes: 6, 4, 3, 1, 3, 4, 6, 4.