

(230907 Dicken Hestrenius, Vallentuna Kulturskola)

TERMINSSTART

MUSIK I KUBIK

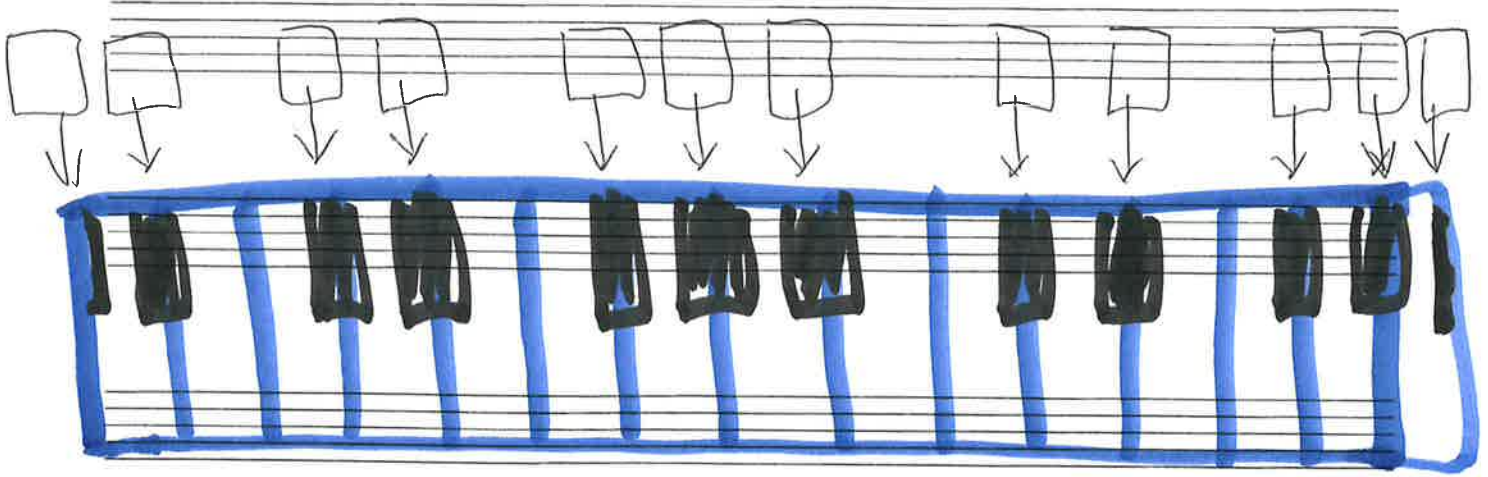
Äger detta häftiga häfte gör

den

(adjektiv)

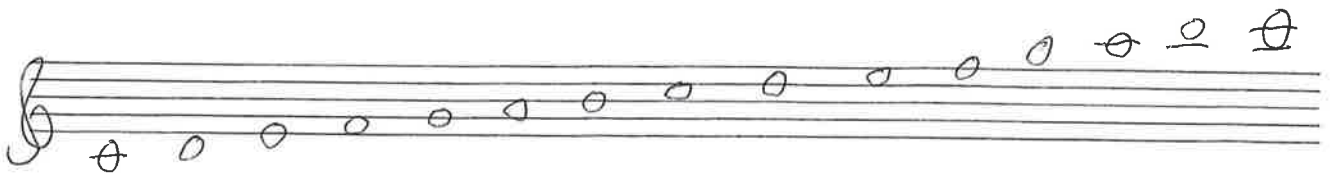
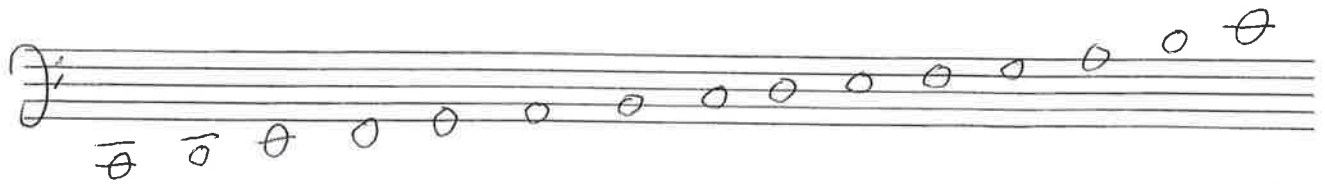
namn.

1. VAD HETER TONERNA ?



Svara tangent: Svara valfritt format t.ex.
Fiss F# Gess Gb

2. VAD HETER TONERNA ?



modell: (Ciss eller C# gärsa)

3. RINGA IN TONERNA SOM INGÅR I ACKORDEN

C

Cm

Bb

Gm

F#m

F6

Fmaj7

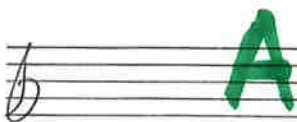
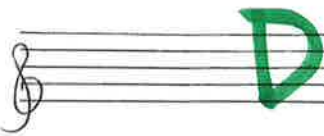
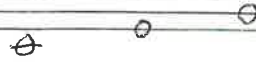
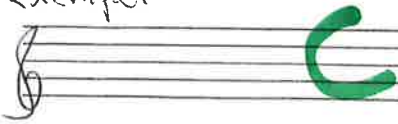
F7

G

4. SPELA ACKORDEN

exempel

Vilka toner ingår?
↓



5A

Skriv "rätt" ackord i Rutorna

(det är lite en smakfråga men...)

exempel

Val C G7

C

G7

G7

C

A musical staff in 4/4 time with a treble clef. It contains a sequence of notes: C4, E4, G4, F4, E4, D4, C4, B3, A3, G3, F3, E3, D3, C3. There are four empty rectangular boxes above the staff, corresponding to the chords C, G7, G7, and C.

Val C G7

5B

A musical staff in 4/4 time with a treble clef. It contains a sequence of notes: C4, E4, G4, F4, E4, D4, C4, B3, A3, G3, F3, E3, D3, C3. There are five empty rectangular boxes above the staff.

Val G D7

5C

A musical staff in 4/4 time with a treble clef and a key signature of one sharp (F#). It contains a sequence of notes: C4, E4, G4, F4, E4, D4, C4, B3, A3, G3, F3, E3, D3, C3. There are five empty rectangular boxes above the staff.

Val Bb F7

5D

A musical staff in 4/4 time with a treble clef and a key signature of two flats (Bb, F). It contains a sequence of notes: C4, E4, G4, F4, E4, D4, C4, B3, A3, G3, F3, E3, D3, C3. There are five empty rectangular boxes above the staff.

Val C F G7

5E

A musical staff in 4/4 time with a treble clef. It contains a sequence of notes: C4, E4, G4, F4, E4, D4, C4, B3, A3, G3, F3, E3, D3, C3. There are four empty rectangular boxes above the staff.

Val F Bb C7

5F

A musical staff in 4/4 time with a treble clef and a key signature of two flats (Bb, F). It contains a sequence of notes: C4, E4, G4, F4, E4, D4, C4, B3, A3, G3, F3, E3, D3, C3. There are five empty rectangular boxes above the staff.

Val G C D7

5G

A musical staff in 4/4 time with a treble clef and a key signature of one sharp (F#). It contains a sequence of notes: C4, E4, G4, F4, E4, D4, C4, B3, A3, G3, F3, E3, D3, C3. There are four empty rectangular boxes above the staff.

Val Bb Eb F7

5H

A musical staff in 4/4 time with a treble clef and a key signature of two flats (Bb, F). It contains a sequence of notes: C4, E4, G4, F4, E4, D4, C4, B3, A3, G3, F3, E3, D3, C3. There are six empty rectangular boxes above the staff.

Val C F G7

5I

A musical staff in 4/4 time with a treble clef. It contains a sequence of notes: C4, E4, G4, F4, E4, D4, C4, B3, A3, G3, F3, E3, D3, C3. There are six empty rectangular boxes above the staff.

lätt spelbar

6A

Hitta på melodi till ackorden (i C dur)

exempel

C F G7 C

Musical staff with treble clef and 4/4 time signature. The melody consists of quarter notes: C4, D4, E4, F4, G4, F4, E4, D4, C4.

6B

C F G7 C

Musical staff with treble clef and 4/4 time signature. The staff is empty for melody writing.

6C

C G7 F G7 C

Musical staff with treble clef and 4/4 time signature. The staff is empty for melody writing.

6D

C G7 C F C G7 C

Musical staff with treble clef and 4/4 time signature. The staff is empty for melody writing.

6E

C F C G7 C

Musical staff with treble clef and 4/4 time signature. The staff is empty for melody writing.

7A

Hitta på ^{lätt spelbar} melodi till ackorden (i F dur)

exempel

F Bb C7 F

F Bb C7 F

7B

F Bb F C7 F

7C

F Bb C7 F Bb F

7D