

Gavotte

Francois Gossec (disp: Dicken)

A Allegretto

Flöjt
p con grazia
Allegretto

Klarinett 1
p con grazia
Allegretto

Klarinett 2
p con grazia
Allegretto

Barytonsaxofon
p con grazia

B

Fl
p *mf*

Kl 1
p *mf*

Kl 2
p *mf*

Barsx
p *mf*

Gavotte av Gossec, Klingande partitur sid 2 av 3

Fl
f
rit.
mf
a tempo
mf

Kl 1
f
rit.
p
a tempo
mf

Kl 2
f
rit.
p
a tempo
mf

Barsx
f
rit.
p
a tempo
mf

Fl
p

Kl 1
p

Kl 2
p

Barsx
p

Gavotte av Gossec, Klingande partitur sid 3 av 3

D

Fl *p delicato* *pp*

Kl 1 *p delicato* *pp*

Kl 2 *p delicato* *pp*

Barsx *p delicato* *pp*

Fl *f* *rit.* D.C. al coda (utan reprinter)

Kl 1 *f* *rit.* D.C. al coda (utan reprinter)

Kl 2 *f* *rit.* D.C. al coda (utan reprinter)

Barsx *f* *rit.* D.C. al coda (utan reprinter)

Gavotte

Francois Gossec (disp: Dicken)

A Allegretto

Flöjt
p con grazia
Allegretto

Klarinett 1
p con grazia
Allegretto

Klarinett 2
p con grazia
Allegretto

Barytonsaxofon
p con grazia

B

Flöjt
p *mf*

Kl 1
p *mf*

Kl 2
p *mf*

Barsx
p *mf*

Gavotte av Gossec, Transponerat partitur sid 2 av 3

Fl
KI 1
KI 2
Barsx

f *rit.* *mf* *a tempo* *mf*

f *rit.* *p* *a tempo* *mf*

f *rit.* *p* *a tempo* *mf*

f *rit.* *p* *a tempo* *mf*

C

Detailed description: This system contains the first five measures of the score. It features four staves: Flute (Fl), Clarinet 1 (KI 1), Clarinet 2 (KI 2), and Bassoon (Barsx). The key signature is one sharp (F#) and the time signature is common time (C). The music begins with a forte (*f*) dynamic. In the second measure, there is a ritardando (*rit.*). The third measure is marked *mf* and *a tempo*, with a dynamic hairpin. A repeat sign with first and second endings is present. The fourth measure is marked *mf*. The system concludes with a common time signature change box labeled 'C'.

Fl
KI 1
KI 2
Barsx

p *p* *p* *p*

Detailed description: This system contains measures 6 through 10. The Flute (Fl) and Clarinet 1 (KI 1) parts feature melodic lines with accents (>) and dynamic hairpins. The Clarinet 2 (KI 2) and Bassoon (Barsx) parts provide harmonic support. The dynamic level is consistently piano (*p*) throughout this section. The system ends with a double bar line.

Gavotte av Gossec, Transponerat partitur sid 3 av 3

D

Fl
p *delicato*
pp

Kl 1
p *delicato*
pp

Kl 2
p *delicato*
pp

Barsx
p *delicato*
pp

Fl
f
D.C. al coda
(utan reprinter)
rit.

Kl 1
f
D.C. al coda
(utan reprinter)
rit.

Kl 2
f
D.C. al coda
(utan reprinter)
rit.

Barsx
f
D.C. al coda
(utan reprinter)
rit.

Gavotte

A Allegretto
p con grazia

B
p *mf*

f *rit.* *a tempo* *mf* **C** *mf*

p

D
p delicato

pp *f*

D.C. al coda
(utan repriser)

rit.

Gavotte

A

Allegretto



B



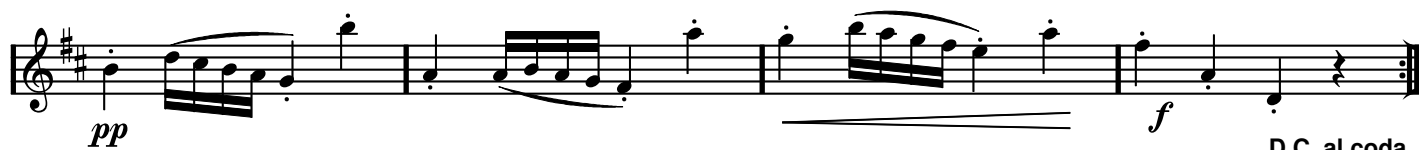
⊕

a tempo

C



D



D.C. al coda
(utan repriser)

⊕



Gavotte

A Allegretto

p con grazia

p *mf*

⊕ a tempo

f rit. *p* *mf*

p

p delicato

pp *f*

D.C. al coda
(utan repriser)

⊕

rit.

Gavotte

A Allegretto

p con grazia

B

p *mf*

\oplus a tempo

C

f rit. *p* *mf*

p

D

p delicato

pp *f*

D.C. al coda
(utan repriser)

\oplus

rit.