

# STÖRTTRIST

Segt

**A**

Trumpet

Altsax

Tenorsax

Trombon

(bas har också en egen stämma som ryms på en sida)

Noterna och vena (ackorden) är blåslinjens. Pianot spelar vackra smetplingor, spritt och sprött.

Piano bas trummor

Badd2 Gm7 F#m9 Cm7 C Cm Cm7 F13 F7/B

Bas:

3

Segt

**A**

Bas

3

Segt

**A**

Trummor: se pianostämman.

Trummor: se ovan

Trp

Alt

Ten

Trb

P B Tr

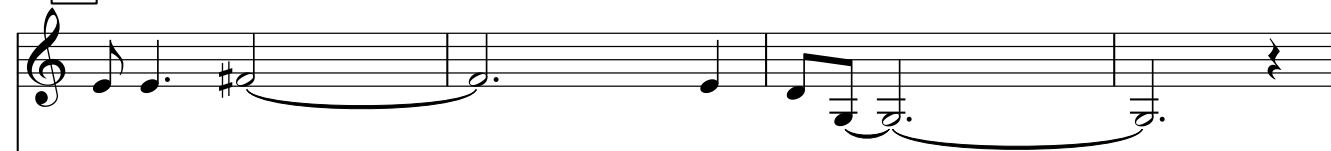
B

(Tr)

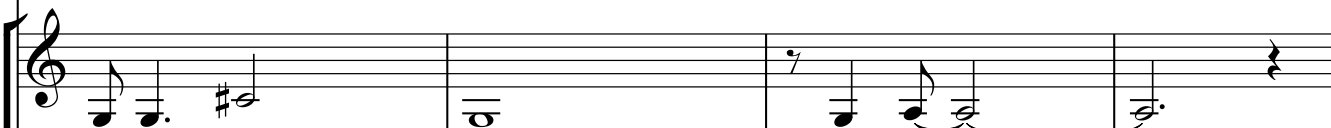
Fmaj7 Em7 Bbmaj7 Amaj7 D7\_ Hmaj7 Dmaj7 E F#m

**B**

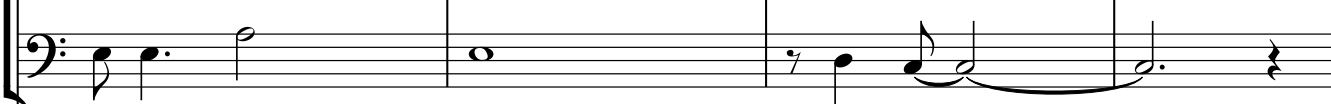
Trp




Alt



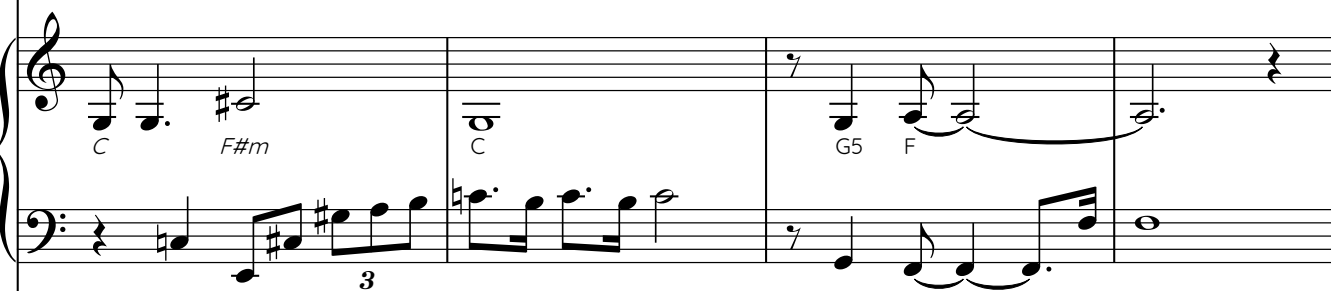
Ten



Trb



P  
B  
Tr



C F#m C G5 F

3

**B**

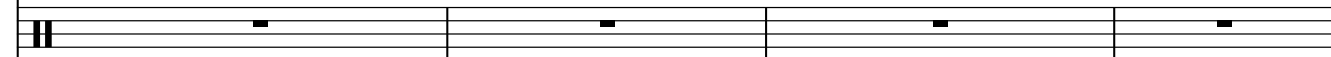
B



3

**B**

(Tr)



Trp

Alt

Ten

Trb

P B Tr

B

(Tr)

Em7 E7b9+5 Fmaj7 F#m7b5 Ab Ab7 Cmaj7/G c GF

C

Trp

Alt

Ten

Trb

Jazz improvisation on different scales and so.  
Don't forget the sustain pedal!

P B Tr

C(sus4) C C Cmaj7 Fmaj7 %

C

B

C(sus4) C C Cmaj7 Fmaj7

C

(Tr)

Störttrist PARTITUR Sida 6 av 8

Trp

Alt

Ten

Trb

P B Tr

C/E Fmaj7 E/B Gm Gm Dmaj7 Em7

B

(Tr)

**D**

Trp

Alt

Ten

Trb

P B Tr

Ebm<sup>6</sup> Abm<sup>7</sup> Ebmaj<sup>7</sup> Dm<sup>6</sup> Gm<sup>7</sup> Dmaj<sup>7</sup>

**D**

B

Ebm<sup>6</sup> Abm<sup>7</sup> Ebmaj<sup>7</sup> Dm<sup>6</sup> Gm<sup>7</sup> Dmaj<sup>7</sup>

**D**

(Tr)

D.C. al 

Trp

Alt

Ten

Trb

P  
B  
Tr

B

(Tr)

D7 Bm7 Gm D/A E/G# Bbmaj7(#11) E7alt. A(b6)

D7 Bm7 Gm D/A E/G# Bbmaj7"11 E7alt. A(b6) D.C. al

D.C. al



# STÖRTTRIST

Dicken Hedrenius

Altsax

**A**

**B**

**C**

**D**

D.C. al

*gliss.*

# STÖRTTRIST

Dicken Hedrenius

Tenorsax

A

Two staves of musical notation for section A. The first staff begins with a treble clef, a key signature of two sharps (F# and C#), and a 4/4 time signature. It contains three measures of music. The second staff continues with four measures, ending with a repeat sign and a double bar line.

B

Two staves of musical notation for section B. The first staff contains four measures. The second staff contains four measures, including a triplet of eighth notes and ending with a repeat sign and a double bar line.

C

A single staff of musical notation for section C, containing eight measures of music.

D

A single staff of musical notation for section D, containing eight measures of music.

D.C. al

A single staff of musical notation for section D.C. al, containing eight measures of music. It features a triplet of eighth notes in the fifth measure and ends with a repeat sign and a double bar line.

A single staff of musical notation for a glissando, starting with a repeat sign and a double bar line, followed by the word "gliss." and a final double bar line.

# STÖRTTRIST

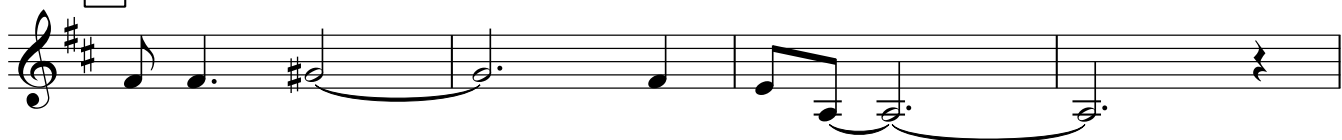
Dicken Hedrenius

Trumpet

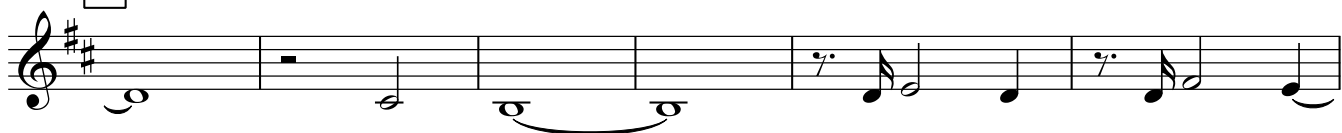
A



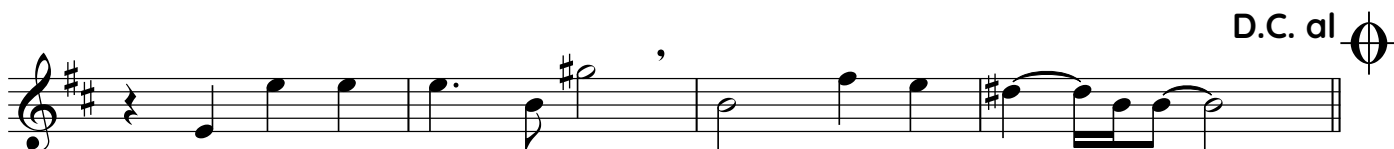
B



C



D



D.C. al

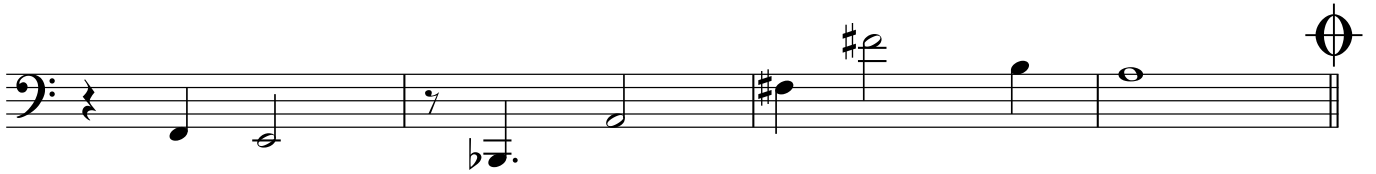
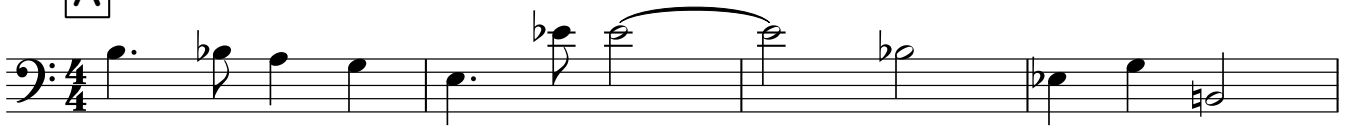


# STÖRTTRIST

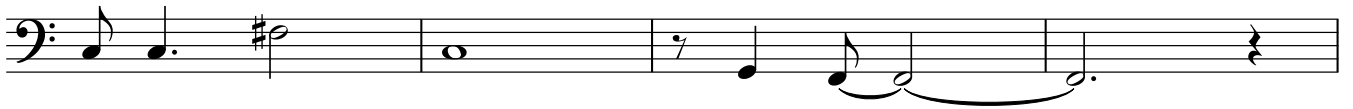
Dicken Hedrenius

Trombon

A



B




C



D



D.C. al 



# STÖRTTRIST

Dicken Hedrenius

Piano-bas-trummor

(bas har också en egen stämma som ryms på en sida)

**A**

Noterna och vena (ackorden) är blåslinjens. Pianot spelar vackra smetplingor, spritt och sprött.

Musical score for section A, piano and bass. The score is in 4/4 time and features a piano part with chords and a bass line with triplets. The piano part has the following chords: Badd2, Gm7, F#m9, Cm7, C, Cm, Cm7, F13, F7/B, Fmaj7, Em7. The bass line has a triplet of eighth notes in the first measure.

**B**

Musical score for section B, piano and bass. The score is in 4/4 time and features a piano part with chords and a bass line with triplets. The piano part has the following chords: Bbmaj7, Amaj7, D7, Hmaj7, Dmaj7, E, F#m, C, F#m, C. The bass line has a triplet of eighth notes in the first measure.

Musical score for section C, piano and bass. The score is in 4/4 time and features a piano part with chords and a bass line with triplets. The piano part has the following chords: G5, F, Em7, E7b9+5, Fmaj7, F#m7b5, Ab, Ab7. The bass line has a triplet of eighth notes in the first measure.

**C**

Jazz improvisation on different scales and so. Don't forget the sustain pedal!

Musical score for section C, piano and bass. The score is in 4/4 time and features a piano part with chords and a bass line with triplets. The piano part has the following chords: Cmaj7/G, C, G, F, C(SUS4), C, C, Cmaj7, Fmaj7, %. The bass line has a triplet of eighth notes in the first measure.

Piano-bas-trummor  
Störttrist, sida 2 av 2

Musical notation for the first system, piano and bass clefs. The piano part has a treble clef and the bass part has a bass clef. The chords are: C/E, Fmaj7, E/B, Gm, Gm, Dmaj7, and Em7.

**D**

Musical notation for the second system, piano and bass clefs. The piano part has a treble clef and the bass part has a bass clef. The chords are: Ebm6, Abm7, Ebmaj7, Dm6, Gm7, and Dmaj7.

D.C. al

Musical notation for the third system, piano and bass clefs. The piano part has a treble clef and the bass part has a bass clef. The chords are: D7, Bm7 Gm, D/A, E/G#, Bbmaj7(#11), E7alt., and A(b6). There is a triplet of eighth notes in the bass line.

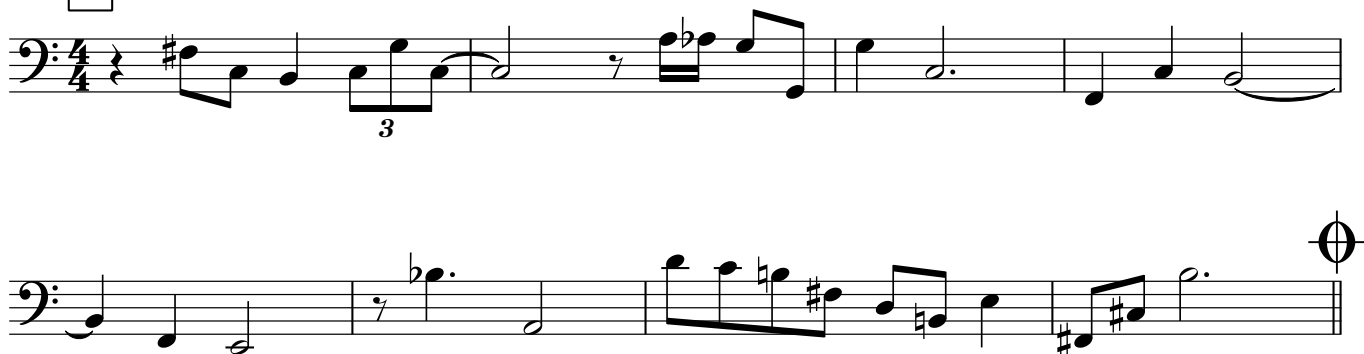
Musical notation for the final system, piano and bass clefs. The piano part has a treble clef and the bass part has a bass clef. The chords are: C# and gliss. (glissando).

# STÖRTTRIST

Dicken Hedrenius

Bas

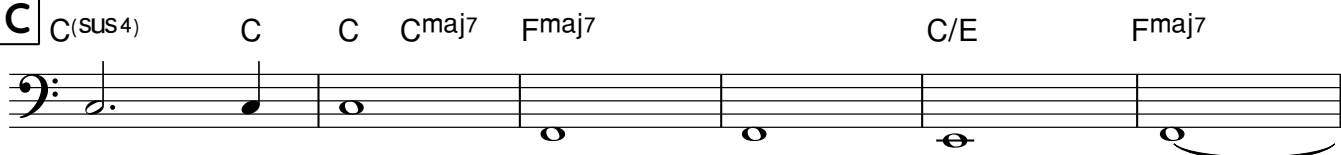
A



B



C



D

