

Altsax 1

Dickon Hedrenius  
180917

# SNORLAX I KÄRSTA

Handwritten musical notation for the first staff, featuring a treble clef, a key signature of one sharp (F#), and a 4/4 time signature. The staff begins with a circled letter 'A' above a repeat sign. The melody consists of quarter and eighth notes.

Handwritten musical notation for the second staff, continuing the melody with quarter and eighth notes.

Handwritten musical notation for the third staff, ending with a circled 'FINE' in a red box and a repeat sign.

Handwritten musical notation for the fourth staff, starting with a circled letter 'B' above the staff. The notes are mostly whole notes with accents.

Handwritten musical notation for the fifth staff, continuing the melody with quarter notes and rests.

Handwritten musical notation for the sixth staff, featuring a sequence of eighth notes with accents.

D.C.  
al Fine

(ingen  
repris)

Three empty musical staves at the bottom of the page.

Altsax 1

Dicken Hedrenius  
180917

# SNORLAX | KÄRSTA

**(A)** B D B C G E E E D C B D B C G B<sup>b</sup>

E C F E C B<sup>b</sup> B G

D G F D D C D B<sup>b</sup> G

**(B)** G

D.C.  
al Fine  
(ingen  
repris)

# SNORLAX I KÅRSTA

(A)

FINE

(B)

D.C.  
al fine

(ingen  
reptis)

# SNORLAX I KÄRSTA

(A) B D B C G E E E D C B D B C G F

E C F E C B<sup>b</sup> B G

A B<sup>b</sup> B D D C D B<sup>b</sup> G

(B) G

D.C.  
al fine  
(ingen  
reptis)





# SNORLAX I KÄRSTA

4

(A)

(B)

D.C.  
al fine  
(utan repris)

# SNORLAX I KÄRSTA

4

(A)

D F D Ess BESS GGG F Ess D F D Ess BESS D

G Ess ASS G Ess DESS D BESS

Fiss G ASS F F Ess F DESS BESS

FINE

(B)

BESS

D.C.  
al fine  
(utan repris)



— SNORLAX | KÄRSTA —

4

(A)

(B)

D.C. al  
Fine  
(utan repris)

# SNORLAX | KÄRSTA

4

(A)

D F D E<sup>b</sup> B<sup>b</sup> G G G F E<sup>b</sup> D F D E<sup>b</sup> B<sup>b</sup> B<sup>b</sup>

G E<sup>b</sup> A<sup>b</sup> G E<sup>b</sup> D<sup>b</sup> D B<sup>b</sup>

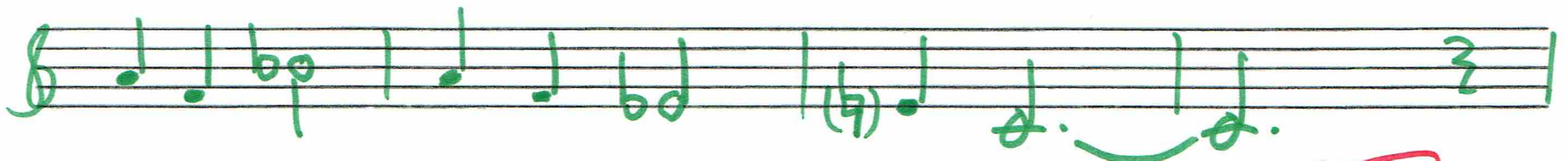
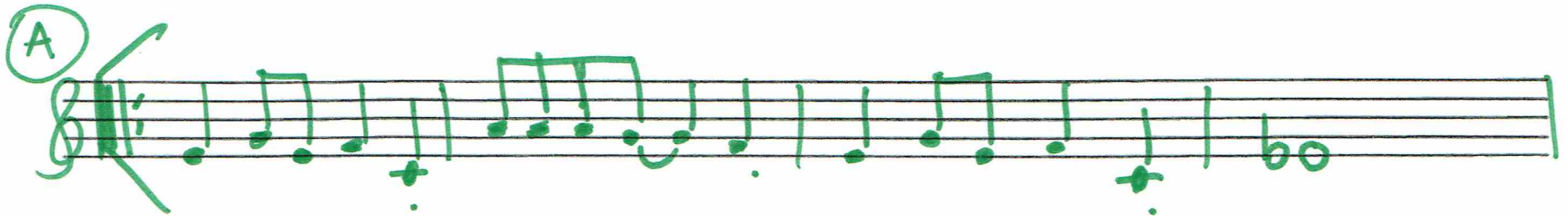
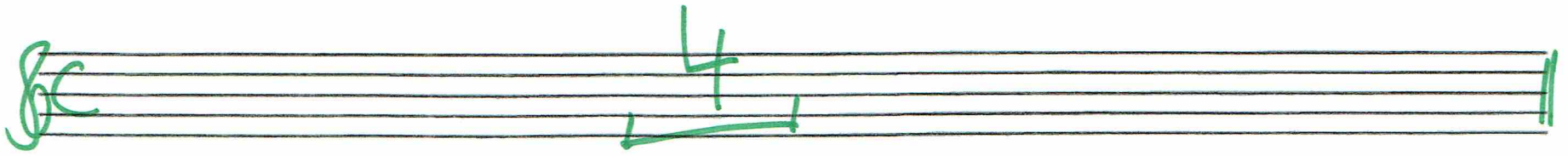
D F<sup>#</sup> G F F E<sup>b</sup> F D<sup>b</sup> B<sup>b</sup>

FINE

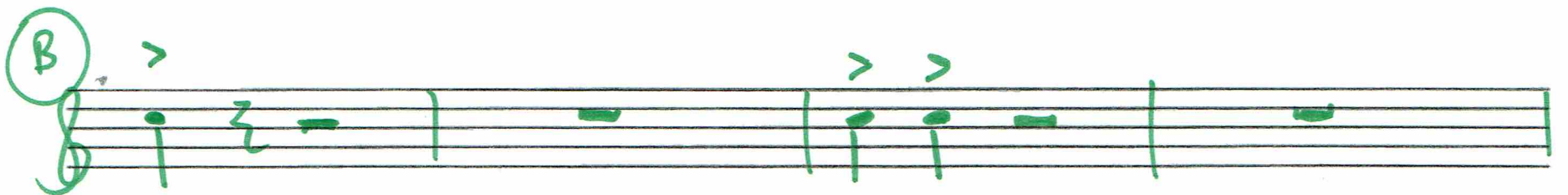
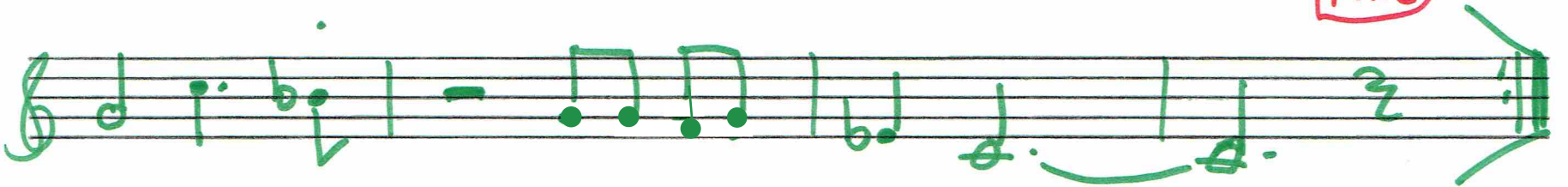
(B)

D.C. al  
Fine  
(utan repris)

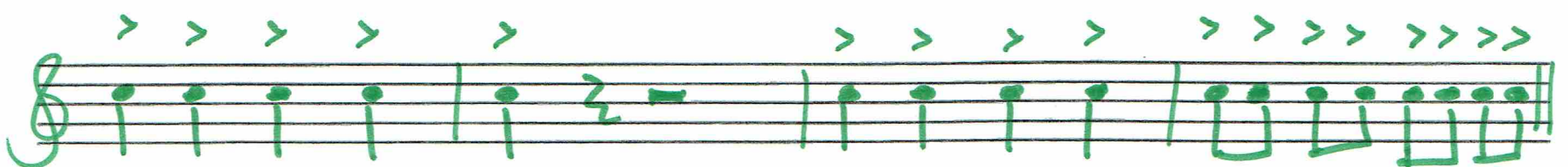
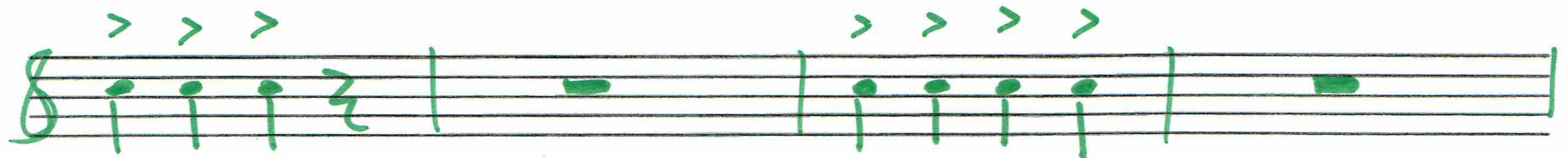
# SNORLAX I KÅRSTA



FINE



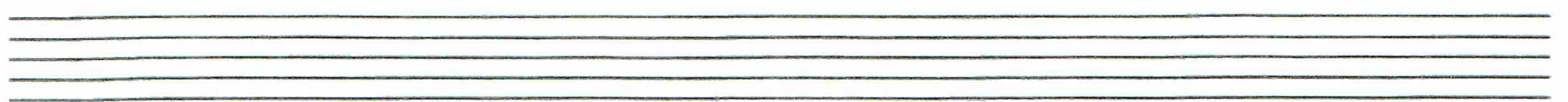
(en oktav ner?)



D.C. al

fine

(ingen repris)



# SNORLAX I KÄRSTA

A musical staff with a treble clef and a 4-measure rest, indicating the start of the piece.

**(A)**

E G E F C A A A G F E G E F C E<sup>b</sup>

A F B<sup>b</sup> A F E<sup>b</sup> E C

G C B<sup>b</sup> G G F G E<sup>b</sup> C

**FINE**

Musical notation for section A, consisting of three staves. The first staff contains the main melody with notes and accidentals. The second and third staves provide harmonic support with chords and single notes. A red box labeled 'FINE' is placed at the end of the section.

**(B)**

(en oktav ner?)

Musical notation for section B, consisting of three staves. The notes are marked with accents (>). The first staff has a few notes, the second has a triplet of notes, and the third has a sequence of notes ending with a double bar line.

D.C. al

**fine**

(ingen repris)

Two empty musical staves at the bottom of the page.



