

sider inkl. denna: 7

S:t james infirmary

arr: Dicken

F1

kl

altsex

trumpet

trambon

(bas)

S:t James infirmary

Flöjt

Klarinett

Altsax

Trumpet

Trombon

Bas

Trummor

Handwritten notes: **Dm A7 Dm Dm Gm Dm**

Detailed description: This system contains the first six staves of the musical score. The key signature is one flat (B-flat) and the time signature is 4/4. The Flöjt staff has a handwritten chord progression: **Dm A7 Dm Dm Gm Dm**. The Klarinett staff has a handwritten note '7' above the first measure. The Trumpet staff begins with a dynamic marking of *mf*. The Trombon, Bas, and Trummor staves are mostly empty, with some notes in the Trombon and Bas staves.

Fl

Kl

Alt

Trp

Trb

Bas

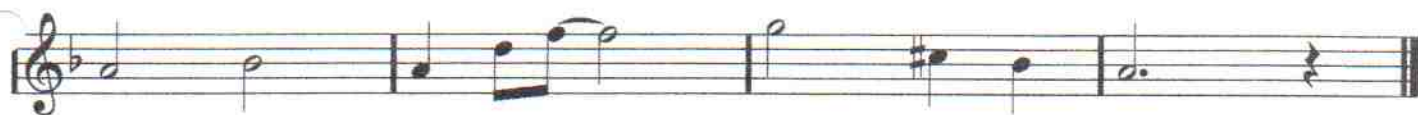
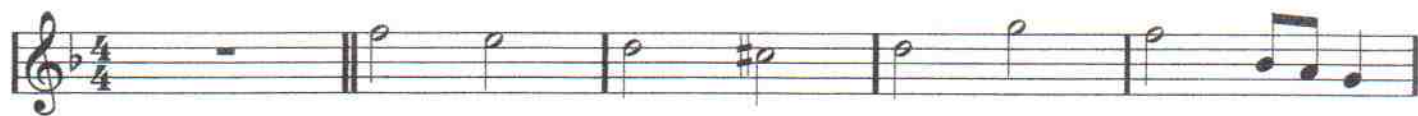
Tr

Handwritten notes: **Dm A7 Dm Harb Bb7 A7 Dm Gm Dm**

Detailed description: This system contains the next six staves of the musical score. The Fl (Flute) staff has handwritten notes: **Dm A7 Dm Harb Bb7 A7 Dm Gm Dm**. The Kl (Clarinet) staff has a handwritten note '7' above the first measure. The Trp (Trumpet) staff has a dynamic marking of *mf*. The Trb (Trombone) staff has a dynamic marking of *mf*. The Bas (Bass) staff has a dynamic marking of *mf*. The Tr (Drum) staff is empty.

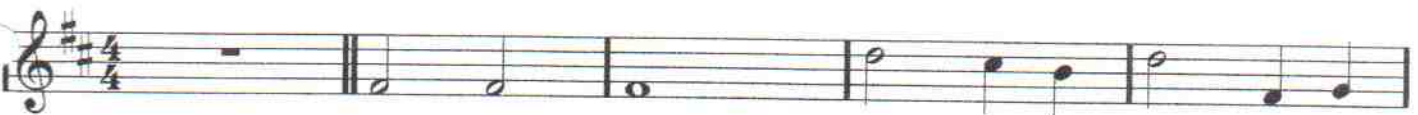
FLÖJT

S:t James infirmary



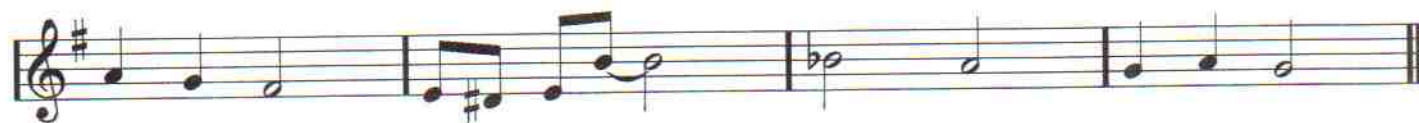
Altsax

S:t James infirmary



Klarinett

S:t James infirmary



Trombon

S:t James infirmary



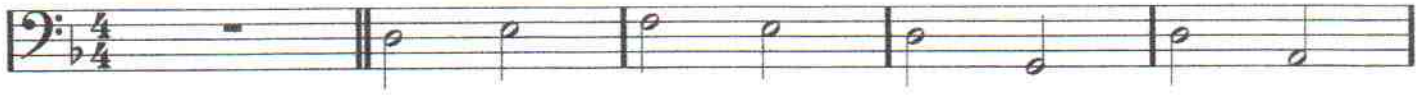
Trumpet

S:t James infirmary



Bas

S:t James infirmary



Piano

S:t James infirmary

|| Dm A7 | Dm | Dm Gm | Dm |

| Dm A7 | Dm Hm7⁻⁵ | B^b7 A7 | Dm Gm Dm |