

fl mp 8va

tr kl mp

alt sax mp

trb mp

klack

piano

komp

$B^b \text{maj}7$ $F \text{II}$ $D \text{m}7$ $D^b \text{13}^{\#11}$ $C \text{m}7$ $F7$ $B^b \text{maj}7$ E^b / B^b

(ei trumset)
(eller möjligen
vispar el. dyl.)

Stilla natt sid 2/5

(A)

fl
p

tp
kl
p

asx
p

tb
tu
mp

klacker

piano

komp

B^b maj7 F¹¹/B^b % B^b maj7 F¹¹ % B^b maj7 % E^b maj7 % B^b maj7 (sus)

Stilla natt sid 3/5

Handwritten musical notation for the first system, featuring four staves:

- fl** (Flute): Melodic line with notes and rests.
- kl tp** (Clarinet in Treble Clef): Melodic line with notes and rests.
- asx** (Alto Saxophone): Melodic line with notes and rests.
- trb tub** (Trumpet in Bass Clef): Bass line with notes and rests.

Handwritten musical notation for the second system, featuring two staves:

- klad scel** (Clarinet in Bass Clef): Staff with a slash indicating it is silent.
- piano**: Staff with a slash indicating it is silent.

Handwritten musical notation for the third system, featuring one staff:

- komp** (Comps): Staff with a slash indicating it is silent.

B^bma⁷ E^bma⁷ 1/2 B^bma⁷(sus) B^bma⁷ F⁷(G^m) F⁷ B^b G^m6 B^b/F

Stilla natt sid 4/5

fl

tp

kl

asx

trb

tub

klocksp

pi

konb

TILL SID 5

F II

Bm7 7/4

Stilla natt sid 5/5 (härifrån ej blås)

①

klockspel

piano

komp

klockspel

pi

komp

klocksp

pi

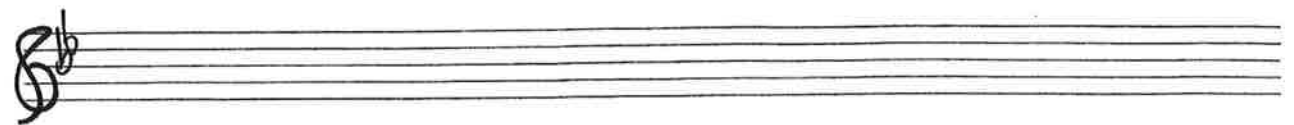
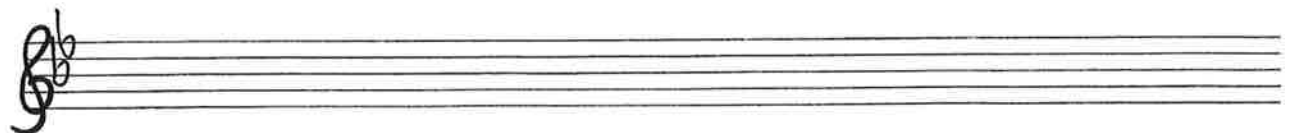
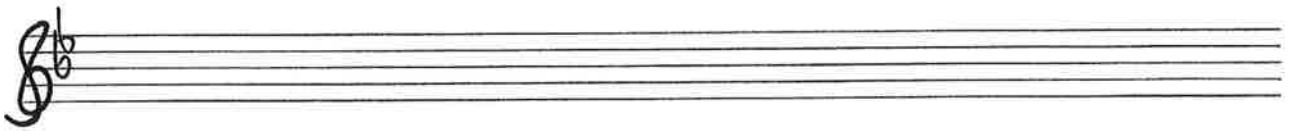
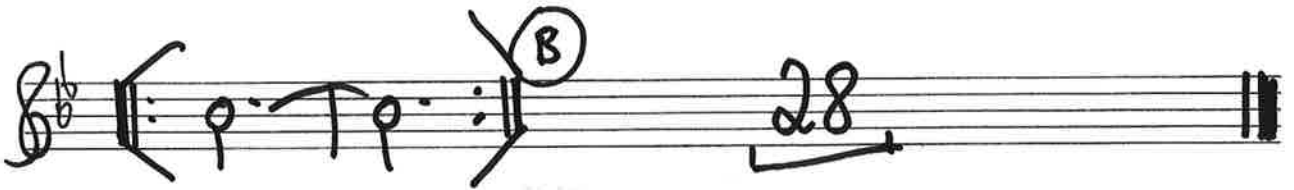
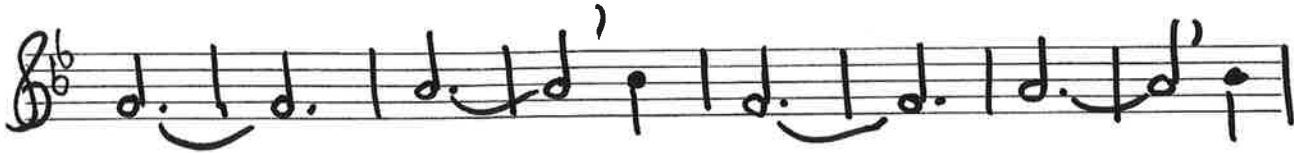
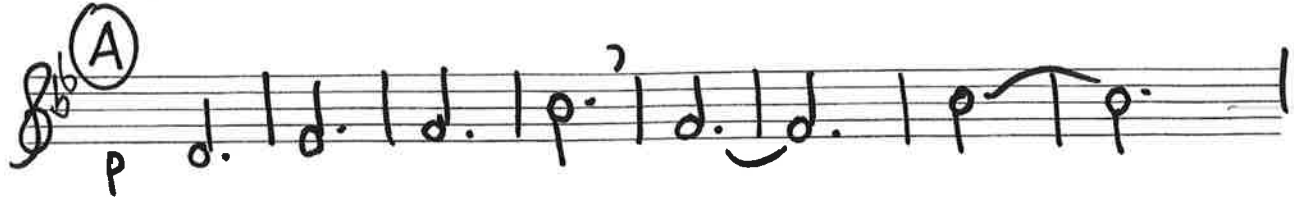
komp

3 ggr

FINE

Blockflöjt

STILLA NATT



T
VÄR
FLÖJT

S
M
L
A
M
M
M
M
M

mp

A

p

B

28

Trumpet
Klarinett
Sopransaxofon

STILLA NATT

Handwritten musical score for the piece "STILLA NATT". The score is written on five staves in treble clef. The first staff begins with a 3/4 time signature and a mezzo-piano (mp) dynamic marking. The second staff is marked with a circled 'A' and a piano (p) dynamic. The fifth staff ends with a circled 'B' and a measure rest for 28 measures. The score concludes with a double bar line.

Four empty musical staves, each consisting of five horizontal lines, provided for additional notation.

ALTSAXOFON

SILLA MATT

Handwritten musical score for Alto Saxophone. The score is written on five staves in treble clef with a key signature of one sharp (F#) and a 3/4 time signature. The first staff begins with a dynamic marking of *mp* and ends with a bracketed measure containing the number 4. The second staff starts with a circled letter 'A' and a dynamic marking of *p*. The third and fourth staves continue the melodic line. The fifth staff features a repeat sign, a circled letter 'B' at the end of the first phrase, and a bracketed measure containing the number 28. The score concludes with a double bar line.

Klackspel
och
piano

STILLA NATT

(A) (En blåsvers
+ 2 takter extra)

kl
pi

3/4 4

Cm7 F7 Bbm7 Eb/Bb

24+2

kl (B)

Bb F7 Bb

kl

Eb Bb Eb

kl

Bb F7 Bb(t) Em7b5

kl

Bb/F F7#9 Bb13#11#9

3 gånger

SLUT

"komp"

STILLA NATT

B^b maj7 F|| Dm7 D^b 13#|| Cm7 F7 B^b maj7 E^b/B^b
 3/4 Bläs piano/mallets

B^b maj7 | F||/ B^b | / | B^b maj7 | F|| | / | B^b maj7 | / |

P. (trombon- och tubamelodi med blässtämmor)

E^b maj7 | / | B^b (sus) | B^b maj7 | E^b maj7 | / | B^b (sus) | B^b maj7 |

(z x x) (z x x x x x) (z x x x)
 F 7 (Gm7) | F 7 | B^b | Gm⁶ | B^b/F | F|| B^b maj7 | / :||

(B) piano/klockspel tersstämmor + komp

B^b | / | / | / | F7 | / | B^b | / | E^b | / | B^b | / |

E^b | / | B^b | / | F7 | / | $B^b(+)$ | E^b 7^{b5}

B^b/F F7#9 B^b 13#|| #9

SLUT

3 99r