

Star Wars theme

John Williams, arr Dicken Hedrenius, Tunablåset, 140317)

Klockspel spelar som altsax (utom i takt 16, då klockspelet är med stämna 2-löpningen)

A

1 flöjt/blfl

2 kl/trp/sopsx

3 altsax

4 trb/barb

Chords: Eb, Bbm7 Eb, Bbm7 Eb, Db Bb

1

2

3

4

Chords: Eb Eb/D, Ab/C Ab Eb, Bb11 Eb, Bbm7 Bb

B

1

2

3

4

Chords: Bb11, Bb11 Bb, Bb11, Gb Bb

Star wars, klingande partitur, sida 2 av 2



1

Ab Db/F Db/F Bb Fm7b5 Fm7b5/Bb

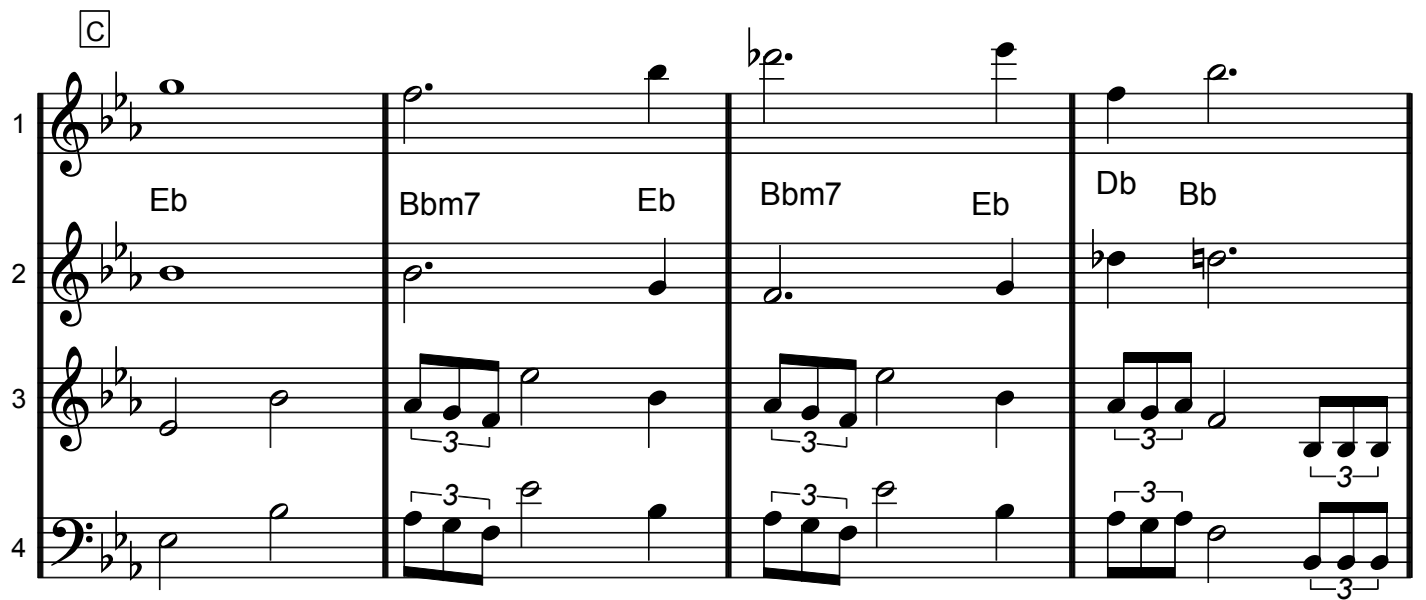
2

3

4

1

Detailed description: This system contains the first four staves of the musical score. The top staff (treble clef) has a whole note chord progression: Ab, Db/F, Db/F, Bb, Fm7b5, Fm7b5/Bb. The second staff (treble clef) features a melodic line with eighth notes and a triplet of eighth notes in the second measure. The third staff (treble clef) has a whole rest in the first two measures, followed by a melodic line with eighth notes and a triplet of eighth notes in the fourth measure. The fourth staff (bass clef) has a whole rest in the first two measures, followed by a melodic line with eighth notes and a triplet of eighth notes in the fourth measure. A first ending bracket is placed above the final measure of the system.



1

Eb Bbm7 Eb Bbm7 Eb Db Bb

2

3

4

C

Detailed description: This system contains the next four staves. A box labeled 'C' is positioned above the first staff. The top staff (treble clef) has a whole note chord progression: Eb, Bbm7, Eb, Bbm7, Eb, Db, Bb. The second staff (treble clef) has a whole note chord progression: Eb, Bbm7, Eb, Bbm7, Eb, Db, Bb. The third staff (treble clef) features a melodic line with eighth notes and triplets of eighth notes in the second, third, and fourth measures. The fourth staff (bass clef) features a melodic line with eighth notes and triplets of eighth notes in the second, third, and fourth measures. A first ending bracket is placed above the final measure of the system.



1

Eb Bbm7 Eb Bb11 Eb Db Bb Bb7 Eb

2

3

4

Detailed description: This system contains the final four staves. The top staff (treble clef) has a whole note chord progression: Eb, Bbm7, Eb, Bb11, Eb, Db, Bb, Bb7, Eb. The second staff (treble clef) has a whole note chord progression: Eb, Bbm7, Eb, Bb11, Eb, Db, Bb, Bb7, Eb. The third staff (treble clef) features a melodic line with eighth notes and triplets of eighth notes in the second, third, and fourth measures. The fourth staff (bass clef) features a melodic line with eighth notes and triplets of eighth notes in the second, third, and fourth measures. A first ending bracket is placed above the final measure of the system.

Flöjtubble

STAR WARS THEME

Handwritten musical notation for the first staff, featuring treble clef, common time signature, and notes with triplets and a circled 'A'.

Handwritten musical notation for the second staff, continuing the melody with triplets and various note values.

Handwritten musical notation for the third staff, marked with a circled 'B', showing a sequence of eighth notes.

Handwritten musical notation for the fourth staff, featuring a series of eighth notes and a double bar line.

Handwritten musical notation for the fifth staff, marked with a circled 'C', showing a sequence of notes in a different key signature.

Handwritten musical notation for the sixth staff, concluding the piece with a double bar line and a flourish.

Empty musical staff.

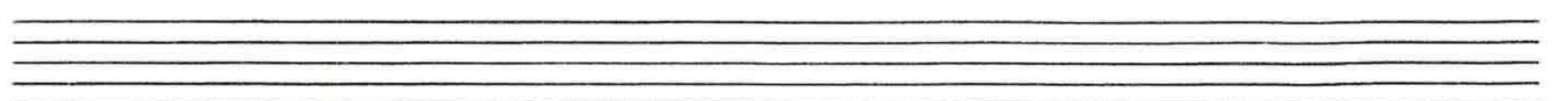
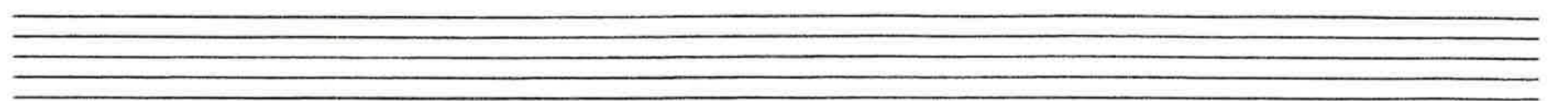
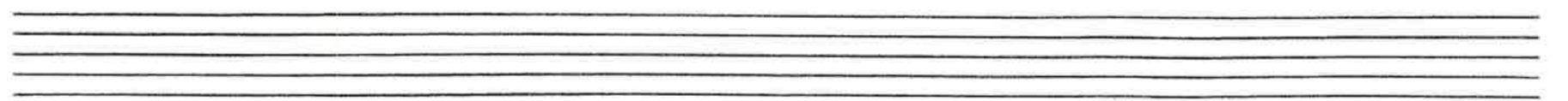
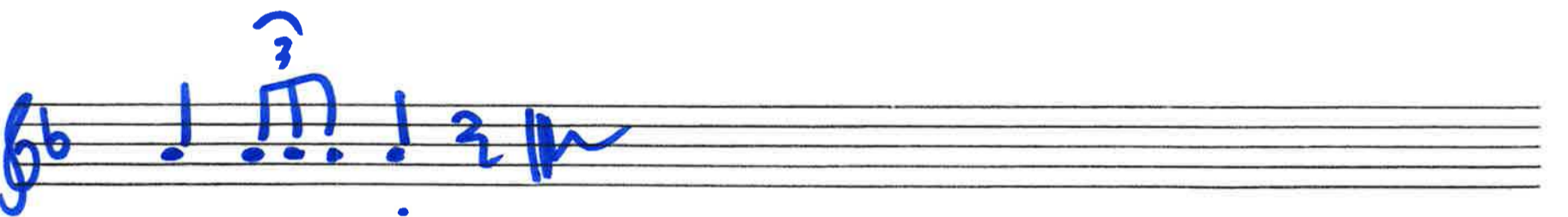
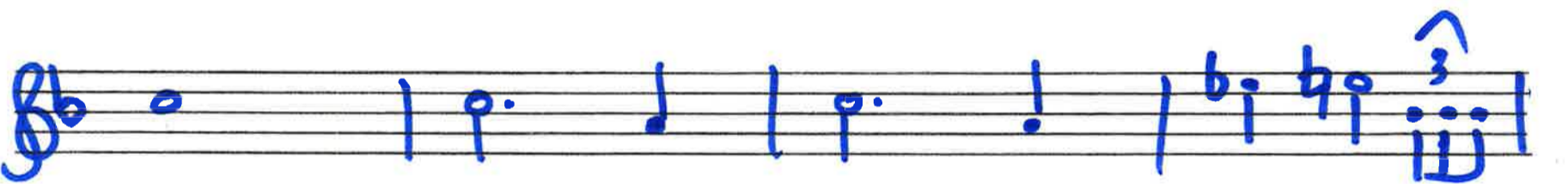
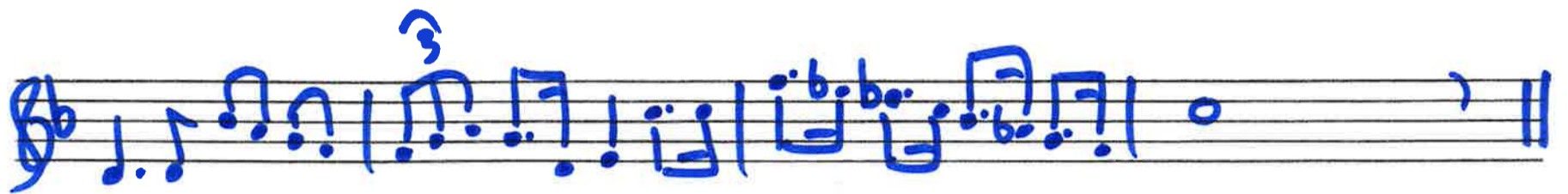
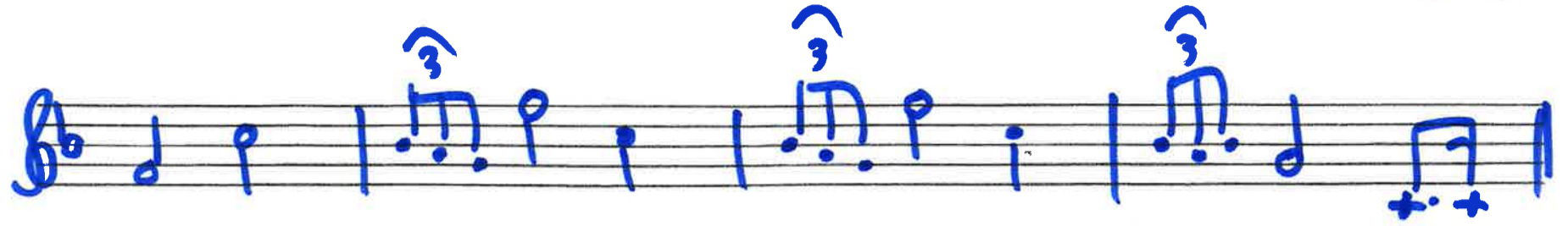
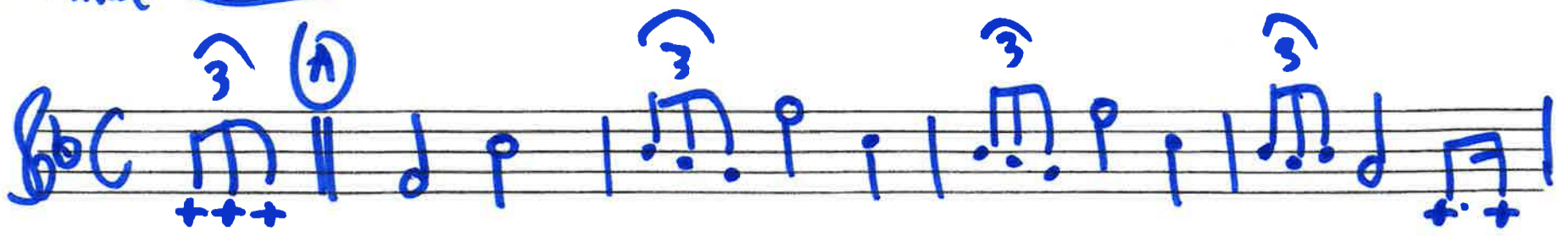
Empty musical staff.

Empty musical staff.

Trumpet
Klarinet

Bubbla

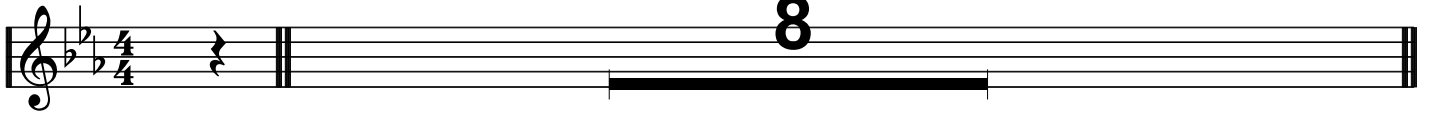
STAR WARS THEME



Star Wars theme

A saxofon/trombon

8



B klarinetter

4



C



Flöjt

Star Wars theme

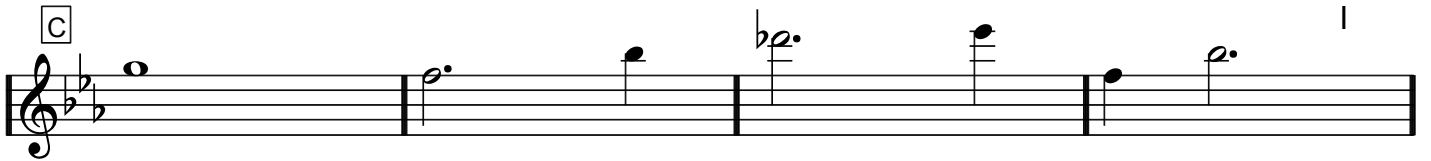
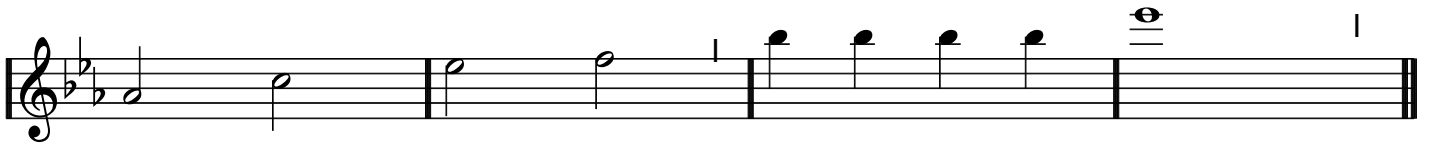
A saxofon/trombon

8



B klarinetter

4



Klarinett, sopransax, trumpet, kornett

Star Wars theme

A

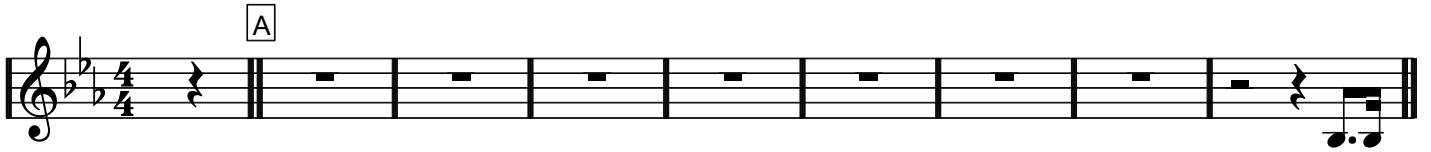
7

B

C

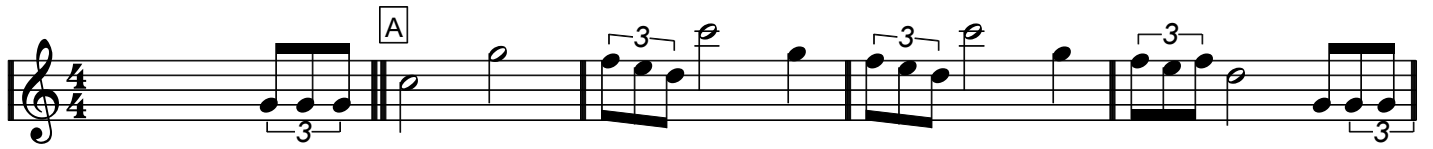
Klarinett trp sopsax kornett klingande

Star Wars theme

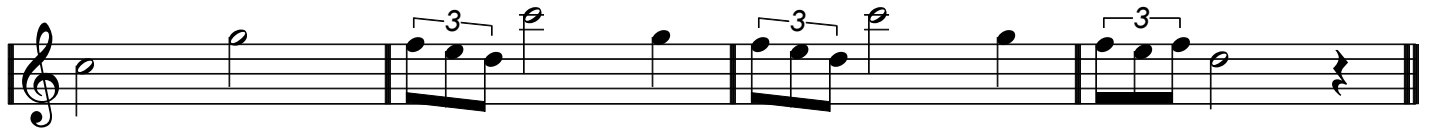


Altsax

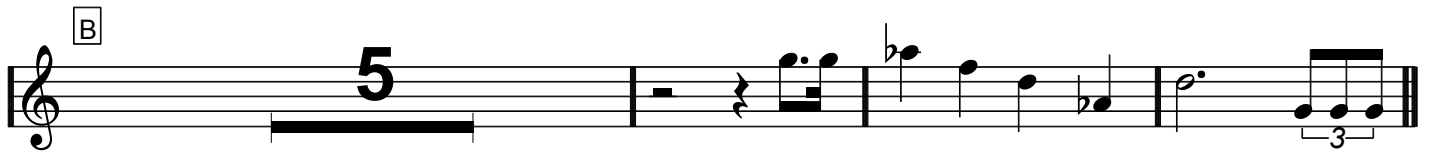
Star Wars theme



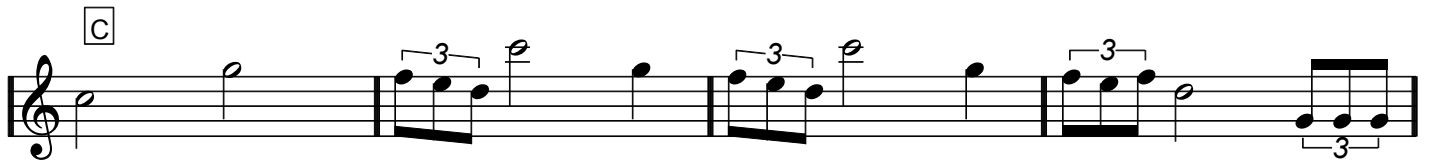
Musical staff A, starting with a treble clef and a 4/4 time signature. It contains a sequence of notes with triplets and rests. A box labeled 'A' is positioned above the first measure.



Continuation of the musical staff from the previous section, featuring triplets and rests.



Musical staff B, starting with a treble clef. It features a large number '5' above the first measure, indicating a five-measure rest. The staff concludes with a triplet. A box labeled 'B' is positioned above the first measure.



Musical staff C, starting with a treble clef. It contains a sequence of notes with triplets and rests. A box labeled 'C' is positioned above the first measure.



Continuation of the musical staff from the previous section, featuring triplets and rests.

Trombon

Star Wars theme

(De höga Essen kan spelas en oktav ner om man vill)

A

B

C

Barytontuba (i Bb)

Star Wars theme

(De höga F:en kan spelas en oktav ner om man vill)

A

B

C

Star Wars theme



Piano

arr Dicken

STAR WARS THEME

Marsch

(A)

Ackords: Eb Bbm7 Eb Bbm7 Eb Db Bb

Eb E7/D A7/C Ab Eb Bb11 Eb Bbm7 Bb

(B)

Bb11 Bb11 Bb Bb11 Gb Bb Ab Db/F Db/F Bb Fm7b5 Fm7b5/Bb

(C)

Eb Bbm7 Eb Bbm7 Eb Db Bb Eb Bb

Bra att veta vid repetitionen: Reprisen på sista raden finns endast i pianostämman. Övriga har 4 + 4 takter.