

Flöjt

(optional)

PERDIDO STORKARMAR

(Duke Ellington, fix för Storkarmar: Dicken)

ÄGG Cm⁷ F⁷ B^b Dm⁷ G⁷

Cm⁷ F⁷ B^b

PYS

FORD solon 8

FINE

KORV ON CUE

D.S. al fine

Klarinett

PERDIDO STORKARMAR

ÄGG

Dm⁷ G⁷ C Em⁷ A⁷

Dm⁷ G⁷ C

PYS

FORD solon

8

FINE

KORV ON CUE

D.S. al fine

PERDIDO STORKARMAR

Altsax 1

ÄGG Am⁷ D⁷ G C^bm⁷ E⁷

Am⁷ D⁷ G

PYS

FORD solon

KORV ON CUE

D.S. al fine

PERDIDO STORKARMAR

ÄGG Am⁷ D⁷ G C^bm⁷ E⁷

Am⁷ D⁷ G

PYS

FORD solon 8

FINE

KORV ON CUE

D.S. al fine

Altsax 3

PERDIDO STORKARMAR

(optional - unis med klarinett)

ÄGG Am⁷ D⁷ G C_bm⁷ E⁷

Am⁷ D⁷ G

PYS

FORD solon 8 FINE

KORV ON CUE

D.S. al fine

PERDIDO STORKARMAR

Barytonsax

ÄGG Am⁷ D⁷ G C^bm⁷ E⁷

Am⁷ D⁷ G

PYS

FORD solon 8

FINE

KORV ON CUE

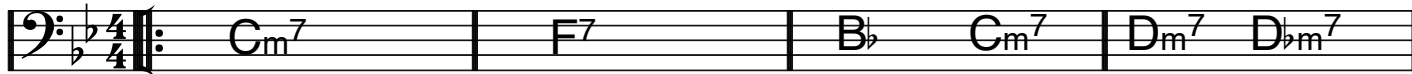
D.S. al fine

Bas (alternativ 1)

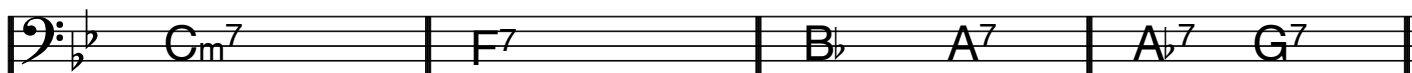
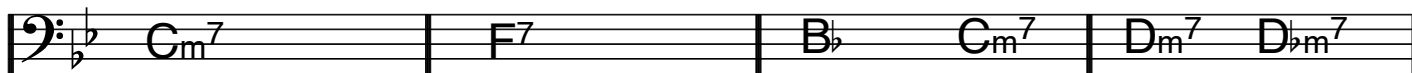
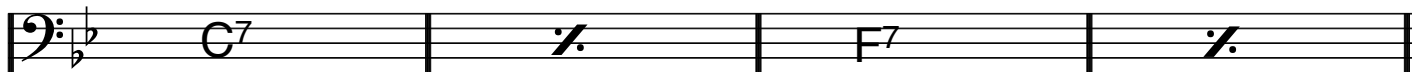
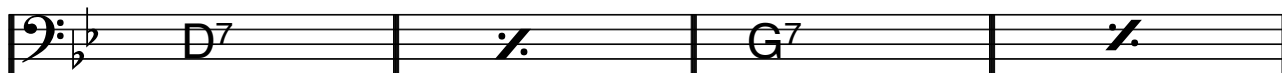
PERDIDO STORKARMAR

ÄGG

(walking)



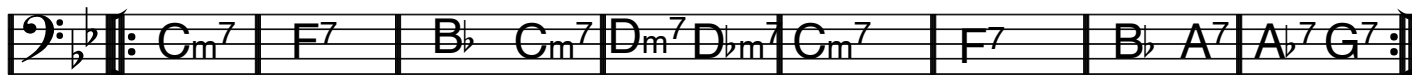
PYS



FINE

FORD

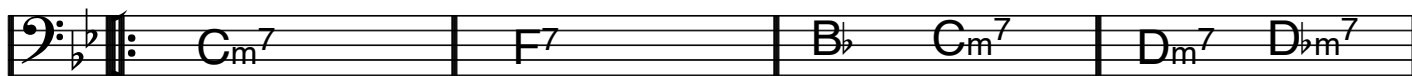
solon



KORV

ON CUE

Tutti



D.S. al FINE

PERDIDO STORKARMAR

Bas (alternativ 2)

Spela inte noterna - kompal!

ÄGG Cm⁷ F⁷ B^b Cm⁷ Dm⁷ D^bm⁷

Cm⁷ F⁷ B^b (A⁷) (A^b7) (G⁷)

(inom parentes: endast första gången)

PYS D⁷ G⁷

C⁷ F⁷

SPÄCK Cm⁷ F⁷ B^b Cm⁷ Dm⁷ D^bm⁷

Cm⁷ F⁷ B^b A⁷ A^b7 G⁷ FINE

Kompa med späck-ackorden

KORV ON CUE Cm⁷ F⁷ B^b Cm⁷ Dm⁷ D^bm⁷

Cm⁷ F⁷ B^b (A⁷) (A^b7) (G⁷)

(inom parentes: endast första gången)

D.S. al fine